

其ノ旨ハ後述ノ如シ

二復員大官官務局第二八編

昭和二十一年二月二十二日

二復員大官官務局第二八編

付外

地方復員指導課長 部長 殿
各工作課長 務課長 課長 殿

係中

議決、志願現狀調査ノ件

一復員本部整理部第二四編附屬第二分課長別段ノ通知書前合部より取付
二付資料左記ニ依り調査ノ上二月末迄ニ調査完了を期す

記

- 一 本調査ハ工作課別所定期并ニ調査ノ上調査ノ旨ト
- 二 調査結果ハ調査ノ旨ニ依り調査ノ旨ト
- 三 調査結果ハ調査ノ旨ニ依り調査ノ旨ト
- 四 調査結果ハ調査ノ旨ニ依り調査ノ旨ト
- 五 調査結果ハ調査ノ旨ニ依り調査ノ旨ト
- 六 調査結果ハ調査ノ旨ニ依り調査ノ旨ト
- 七 調査結果ハ調査ノ旨ニ依り調査ノ旨ト
- 八 調査結果ハ調査ノ旨ニ依り調査ノ旨ト
- 九 調査結果ハ調査ノ旨ニ依り調査ノ旨ト
- 十 調査結果ハ調査ノ旨ニ依り調査ノ旨ト

品類書ハ左記ノ如クナルコト (A 火車 共)

DESCRIPTION	TYPE	CAPACITY	YEAR OF MANUFACTURE	NO. OF UNITS	REMARKS
(1) DESCRIPTIONニハ工作機械、製鉄機械、木工機械、製糖機械、其					
他製糖機械、製鉄機械ノ類トシテ本欄分記入ノコト					
(2) YEAR OF MANUFACTURE不明ノ場合ハ推定年ヲ記入ノコト					
(3) REMARKS 製造場所及製造者ノ不明等ハ其ノ他ヲ記入ノコト					
(4) Aハ直営生産ニ適用セルモノBハ補助物ノモノニシテ兩者ヲ混同セザルコト					

六 調査範圍ハ相當大型ノモノニ限定シ調査ナク濶クテ小數ノモノハ皆ナ
ザルモノトス

(参)

Form A-5

1. Name of Firm

Romaji _____

Kanji _____

2. Address _____

3. Name of Plant _____

4. Address _____

7. Equipment in Plant (Complete specifications including capacity, Type, and year of manufacture are required for each unit.)

A. Production equipment

Description

No. of Units

B. Auxiliary equipment (Transformers, Generators, Boilers, etc.)

Description

No. of Units

Signature of Executive

機密印物

(寫) 第十一号夜夜防務電

昭和三十一年二月三日

受信時刻

時 分

受信者

各役員
各課長

受報者

發信者

航本整理部長

電

文

(無線)

航本整理機密第三三五番電

日 時 分

機密印物

第二役員有航本整理部第三八部紹介中用紙

第五「」調書機械設備製作所別台数

追加相成後

(終)

海軍

1111

十一海軍航空機務整備班長殿

二復原本整備部第四二號

昭和二十一年二月二十一日

二復原本整備部第四二號

各地方復原班長等
各地方復原班長等
各地方復原班長等

發部長

發部長

發部長

昭和二十一年二月二十二日二復原本整備部第四二號照會ニ左記追加時表相版
尚本件ハ二月二十二日二復原本整備部第四二號照會ニ左記追加時表相版

記

原式照會書ハ本件ニ依り二復原本整備部第四二號照會ニ左記追加時表相版

例

Description	Type	Capacity	Year of manufacture	No. of Unit	Makers	Remarks
Lathe	English	Bed length 4' Swing 6"5"	1938	40	20 Ikegai 20 Karathu	2 motors is out of order
"	American	Bed length 6' Swing 9"	1925	15	Wakayama	3 is no motor



第二復員大臣官房航本整理部長殿

二復航本整理部第四二號 吳管第七〇三號

昭和二十一年二月二十六日

第二復員大臣官房航本整理部長

各地方復員局營業部長殿
各航空關係工作廳事務整理班長殿

機械設備現狀調査ノ件照會

昭和二十一年二月十二日二復航本整理部第二八號照會ニ左記追加調査相
成度 尙本件ハ二月二十二日航本整理部長ヨリ電報照會セラルニ有之
爲念

記

様式第五調書A及B項ニ機械設備製作所別臺數記入ヲコト
例

(邦文タイプライター用紙中)

海軍

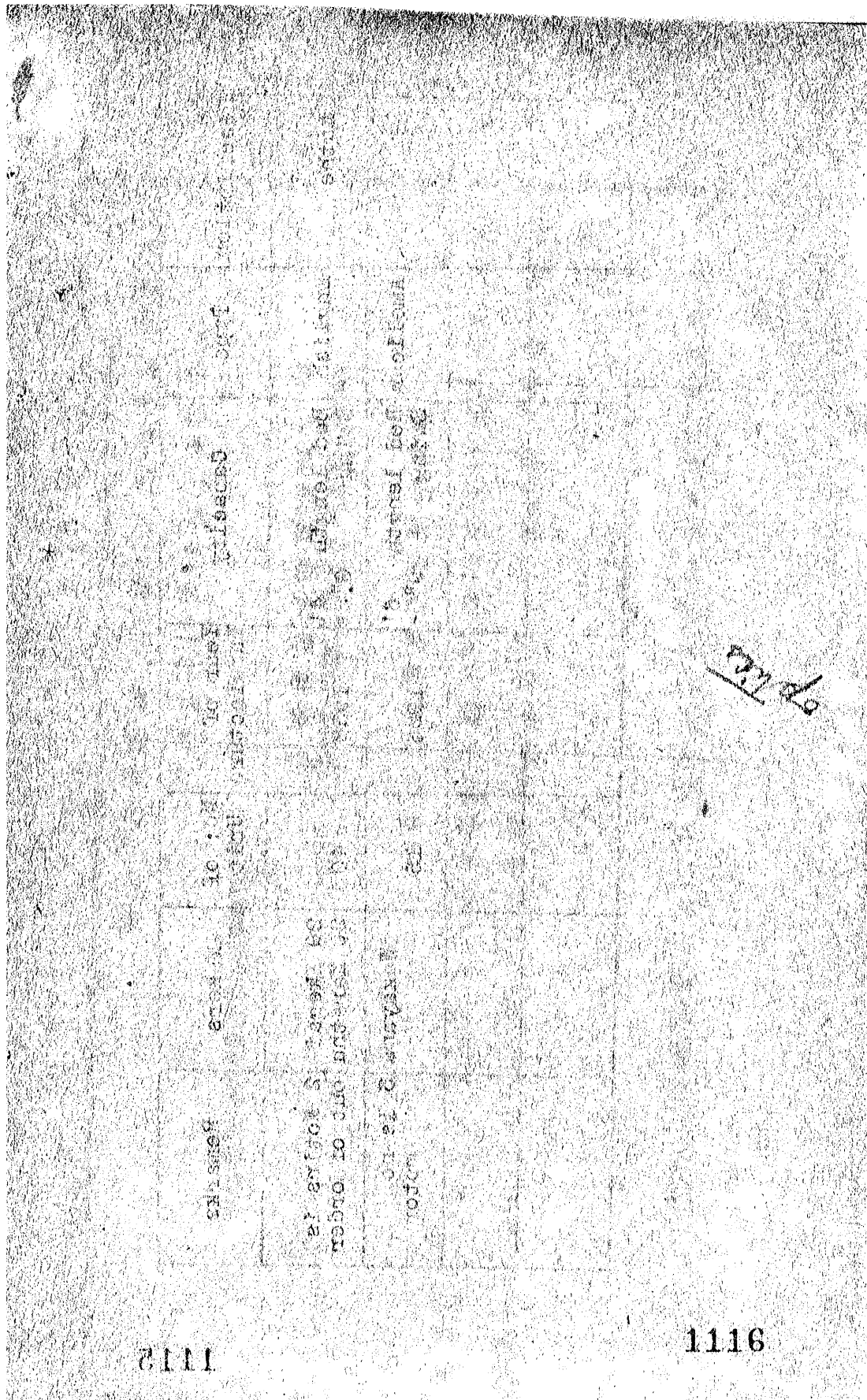


11 國 庫
1946.10.10
1946.10.10

Description	Type	Capacity	Year of Manufacture	No: of Unit	Makers	Remarks
Lathe	English	Bed length 4' Swing 6"5	1938	40	20 Ikegai 20 Karathu	2 Motors is out of order
"	American	Bed length 6' Swing 9"	1925	15	Wakayama	3 is no motor

1115

1110



1111

1116

二復讐本整理部第六一號

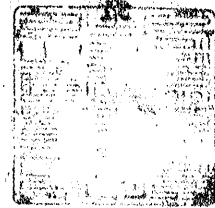
昭和三十一年一月二十四日

課長

信官

横、吳、宮、神、大湊營業部長
鹽川、相模、第一及五火藥廠
第一航空廠(後方部)後務處理事務所
殿

第二復讐大臣官房檢本整理部



生産用原材料使用実績及工場設備調査ノ件照會

中務 首題ノ洋判紙様式及左記要領ニ依リ調査ノ上二月末日迄ニ三通送付相成度

記

一本調査ハ概須賀ハ本廠及平塚、深澤、川崎各分工場ニ、吳ハ本廠及宇都部分工場ニ、大湊ハ本工場及北田分工場ニ夫々區分ノ作製スルモノトス

二別紙様式中

(一)第五編ニハ普通鋼、特鋼、鐵鋼、特殊鋼、銅、アルミ、鉛、鋅、錫、燃料其ノ他火藥

爆藥ノ原料タル硝酸、メタノール、硝兵器、機械器具生産用主要原材料ノモノ付最大生産能力時

ニ於ケル趣去ノ混用実績ヲ記入スルモノトス

(二)第六編ハ調査ニ及ハス

(三)第七編ニハ調査ニ於テ最大生産能力ノ設備セル當時ノ設備ヲ生産設備ト補助設備ニ區分シ記入スルモノトス

三第一航空廠ハ艦本關係ノ三行調査相成度

(終)

様式
Form A-5

1. Name of Firm

Romaji _____ Kanji _____

2. Address _____

3. Name of Plant _____

4. Address _____

5. 未加工材料 ツカウ 能力 製作
Raw materials used at capacity production

記号
Description

数量 毎月
Quantity per Month

価値 円
Value in Yen

6. 結果 工場 能力 生産 品 設備
Products at capacity production with present workable equipment

記号 種類
Description

数量 毎月
Quantity per Month

価値 円
Value in Yen

様式
Form Ab.

7. Equipment in Plant (完全+ 明細書 724
capacity, type, and year of manufac-
ture are required for each unit.)

A. Production equipment (生産設備 能力 形式 製作年 必要人数 各単位)

Description (種類) No. of Units
区 分

B. Auxiliary equipment (補助設備 変圧器 発電機
(transformers, Generators,
Boilers, etc.)

Description (種類) No. of Units
区 分

Signature of Executive.

二復歴本整務部第九九號

昭和二十一年二月九日

第二復員大臣官房歴本整務部

精、英、佐、縣、大湊管業部長
豊川格様

三火
務務所

殿



生産用原材料使用実績及工場設備調査ノ件申
訂正ノ旨告知

一月二十四日二復歴本整務部第六一號照會自臨ノ旨申様式第七項ニ對スル
調査ノ別紙様式及左記要件ニ依リ調査ノ上二月末日迄ニ送付相成慶

追テ相須賀管業部ハ多賀城工場、第一及第二火薬廠ヲ吳管業部ハ光工廠
ヲ併セ調査相成慶(前照會第五項ノ調査ヲモ含ム)

記

一別紙様式中

(1) ▲ 煤ノ兵給、機械器具、火薬及原材料等ヲ生産スルニ要スル所有ノ

工作機械（修理用を含む）、火薬製造設備、電気炉、等ニ付一品毎ニ所要ノ項ヲ調査記入スルモノトス

(四) 日項ニハ製塵機、發電機、鍋、等現有ノ補助設備ニ付一品毎ニ所要ノ項ヲ調査記入スルモノトス

但シ(イ)及(四)項共賠償ノ対象トナラサル小物ノ器具類ハ計上スルニ及ハス

二 機器ノ型式、能力、製造年、全ク同一ノモノハ一括記入ノコト

三 進駐軍占領ノ爲調査不能ノ工場ハ終戦當時ノ現状ヲ明細目録ニ依リ別紙

式ニ書寄ヘ調査シ其ノ旨明瞭ノコト
四 水十一施設別ニ本関係ノ二付調査程度

結果 能力 装置 動機心 装置
 6. Products at capacity production with workable equipment

種類 Description (区分)	戦時中、製作 At the time of War production		戦、終二 At the end of war	
	Quantity per month A 毎 数量	Value in yen 公債 円 行	Quantity per month	Value in yen

設備
 7. Equipment in plant at present
 生産 設備
 A. production equipment

1122

Description	Type	Capacity	Year of manufacture	No. of Units	Remark
種類 (区分)	形式	能力	製造年	單位	記号

補助 設備 変圧器 発電機 缶
 B. Auxiliary equipment (Transformers, Generator, Boiler, etc.)

Description	Type	Capacity	Year of manufacture	No. of Units	Remark

(寫送付先) 會、各廠設備整理班

(美濃街、新平葉)

昭和三十一年二月十四日

横兵佐善大珠

受信者

各廠營業部

受報者

發信者

艦本整理部

樂器部第三三五五番電

二月九日三復艦本整理部第九九號添付ノ工場設備調

査様式申第七項ノ「A」及「B」表ニ製造所名ヲ追加

調査アリ度

(終)

海軍

昭和二十一年三月一日

吳地方復員局經理部

元第十二海軍航空廠残務整理班長

第三復員大臣官房艦本整理部長殿

生産用原材料使用実績、件回答

二後艦本整理部第六一號ニ依ル首題、件別紙、通ニ付可然
御了知相成度

(別紙添)

(終)



(添紙別紙乙)

海軍

11th Navy yard

5. Raw materials used at capacity production

Description	Quantity per month	Value in yen	Remarks
plain carbon steel	300 tons	120,000 00	
Special steel	50 tons	175,000 00	
Copper	100 tons	300,000 00	The later half of 1944
Aluminium	10 tons	30,000 00	
Lead metal	15 tons	1,050 00	
Zinc metal	60 tons	72,000 00	
Tin metal	10 tons	45,000 00	
Fuel Coal various kinds of	4,000 tons	200,000 00	
oil	500 tons	60,000 00	

* not using nitric acid and meta acid in 11th navy yard.

1125

海軍

EQUIPMENT IN PLANT

AT PRESENT

1 MARCH 1946

FORMER

XI NAVY YARD

1126

NANZAN BUILDING BOILER HOUSE
GENERAL DEPARTMENT

NOTICE
AUXILIARY
EQUIPMENT
(B)

DESCRIPTION	TYPE	CAPACITY	YEAR OF MANUFACTURE	NO. OF UNITS	MAKERS	REMARKS
STEAM BOILER	WATER TUBE	5/H		2	NAVY	
WATER FEED PUMP	WEAR TYPE			1	KOBE-ZOSEN	

1127

No. 1 TUNNEL
AERO PLANE BRANCH

DESCRIPTION	TYPE	CAPACITY	YEAR OF MANUFACTURE	No. OF UNITS	MAKERS	REMARKS
LATHE	TABLE	LONG BED 4 FT	1944	1	JAPANESE	OUT OF ORDER
?		"	1940	3	"	"
?		6 FT	1925	1	KARATU	"
?		"	1930	8	KARATU. 6 OKUMA. 2	"
?		"	1935	7	KARATU. 3 HIRAO. 4	"
?		"	1940	9	RIKEN	"
?		8 FT	1930	2	JAPANESE	"
?		"	1935	7	IKEGAI. 1 KOHAN. 1 OKUMA. 5	"
?		10 FT	1930	1	JAPANESE	"
?	HORIZONTAL	No. 1	"	2	"	"
?	"	No. 2	1940	1	KOKUSANSEIKI	"
?	"	No. 3	1935	4	JAPANESE. 1 IKEGAI. 1 HIDACHI. 2	"
?	"	"	1940	3	TOKYOKIKAI. 1 KOKUSANSEIKI. 2	"
?	"	No. 5	"	5	WAKAYAMA	"
MILLING MACHINE	SPARE	LONG BED 800MM	"	3	KAWANISIKOKU	"
?	"	600MM	1935	1	"	"
?	HORIZONTAL	No. 2	"	4	SINOHARA. 2 HIDACHI. 1 GASUDEN. 1	"
?	VERTICAL	No. 2	"	2	HIDACHI. 1 GASUDEN. 1	"
?	UNIVERSAL	No. 2	"	4	NIGATA. 3 HIDACHI. 1	"
?	VERTICAL	No. 2	1943	2	KYOTO KOSAKU	"
?	"	No. 3	1930	1	FOREIGN	"
?	"	No. 3	1935	3	IKEGAI. 2 OKUMA. 1	"
?	"	No. 3	"	10	KIOSITA. 2 HIDACHI. 2 IKEGAI. 2 OKUMA. 1 YOSIKAWA. 1	"
?	"	No. 3	1940	2	KINOSITA.	"
SHAPER	SPECIAL	KELLER MACHINE	1935	1	KELLER (U.S.A)	"
?		STROKE 380MM	"	3	SAITO	"

1128

SHAPER		STROKE 410MM	1935	1	OKUMA	OUT OF ORDER
4		500MM	"	1	"	"
4		610MM	"	1	"	"
SLOTTER	VERTICAL	300MM	1920	1	YAMATAKE	"
4	"		1930	1	FOREIGN	"
4	"	500MM	1935	1	HIRAO	"
GRINDING MACHINE	HORNING	70MM	1944	1	OSAKAKIKO	"
4	INTERNAL	70MM	1940	1	HAMADA	"
4	"	T72	"	2	TOYO	"
4	SURFACE	TABLE 200X60	"	1	HIDACHI	"
4	"	200X800	1943	3	RIKEN. 2 MUNDEN. 1	"
4	TOOL	SMALL	1930	3	IKEGAI. 1 SAITO. 1 JAPAN. 1	"
4	"	TABLE LENGTH 700MM	"	1	OKUMA	"
4	"	TABLE 100X400	1940	1	NIPPONSEI	"
DRILLING MACHINE	VERTICAL	TABLE DIA 300MM	1943	4	KOIDE	"
4	RADIAL	ARM LENGTH 800MM	1935	1	IKEGAI	"
4	"	2000MM	1940	1	OSAKAKIKO	"
4	VERTICAL	TABLE DIA 200MM	1930	1	JAPANESE	"
4	"	"	1935	1	KARATU	"
4	"	600MM	1930	2	SINSINATI. 1 TEYB. 1	"
4	"	"	1940	1	ROKUROKU	"
GEAR CUTTING MACHINE	SPUR	FERROW 102MM	1935	2	MIZOGUCHI. 1 U.S.A. 1	"
4	"	100MM	1943	1	HOWA	"
4	HOBBIING	TABLE DIA 300MM	1940	1	KARATU	"
4	BEVEL	MAXIMUM DIA 60MM	"	1	OSAKAMAERAWA	"
OTHER MACHINE	TAPPING	50MM	1935	1	JAPAN	"
PRESS	FOR PLATE	HAND	1930	1	"	"

PRESS	FOR PLATE	20T	1943	1	YAMAKAWA	OUT OF ORDER
↳	↳	↳	1930	1	FOREIGN	↳
↳	↳	↳	1942	1	YAMAKAWA	↳
↳	↳	15T	1940	1	ISHIHARA	↳
↳	↳	10T	1935	2	JAPANESE	↳
WELDING MACHINE	ELECTRIC		1944	2	OSAKA	↳
↳	↳		1930	2	FOREIGN	↳
TESTER	FOR METAL MATERIAL	TENSION	1935	1	↳	↳
↳	↳	SHOCK	↳	1	↳	↳
↳	↳		↳	1	↳	↳
↳	↳		1930	1	MATSUMURA	↳
↳	↳	HARDNESS	1935	1	JAPANESE	↳
↳	↳	PRESS	↳	1	↳	↳
HEATING FURNACE	GUSS	1500X1500	↳	2	CHUGOKU DENKI	↳

No. 4 TUNNEL
AERO PLANE BRANCH

DESCRIPTION	TYPE	CAPACITY	YEAR OF MANUFACTURE	No. OF UNITS	MAKERS	REMARKS
METAL SAWING MACHINE	HACK SAW	100 MM	1935	1	JAPAN	OUT OF ORDER
DRILLING MACHINE	TABLE	500X500 ^{MM}	?	1	?	NEED TO REPAIR
?	?	?	1943	2	?	?
?	?	200X200 ^{MM}	?	1	?	
SHAPER		120 MM	?	1	CHINA	

1131

No. 10 SHOP
AERO PLANE BRANCH

DESCRIPTION	TYPE	CAPACITY	YEAR OF MANUFACTURE	NO. OF UNITS	MAKERS	REMARKS
CRANE	OVER HEAD	25~5T	1943	1	SUMITOMIKAWA	NEED TO REPAIR
"	"	10T	1923	1	HIDACHI	"

1132

No. 11 SHOP

AERO PLANE BRANCH

DESCRIPTION	TYPE	CAPACITY	YEAR OF MANUFACTURE	NO. OF UNITS	MAKERS	REMARKS
○ CRANE	OVER HEAD	15 T	1935	1	HIDACHI	
○ AIR COMPRESSOR		PRESS 7 KGF/CM ²	1943	1		OUT OF ORDER

1133

No. 20 SHOP

AERU PLANE BRANCH

DISCRIPTION	TYPE	CAPACITY	YEAR OF MANUFACTURE	No. of UNITS	MAKERS	REMARKS
PRESS	MOTOR DRIVE		1940	1	TOYO BANKIN	
"	HAND		1930	1	JAHAMSEI	
CRANE	OVER HEAD	30~5T	1943	1	HIDACHI	NEED TO REPAIR
AIR COMPRESSOR		PRESS 7 kg/cm ²	1944	1	"	

1134

No. 40 SHOP
TEMPORARY WELDING SHOP

DESCRIPTION	TYPE	CAPACITY	YEAR OF MANUFACTURE	NO. OF UNITS	MAKERS	REMARKS
LATHE	SPECIAL		1935	1	KAIDA	OUT OF ORDER
DRILLING MACHINE	VERTICAL		1930	1	JAPANESE	✓
HAMMER MACHINE	DROP HAMMER	3T	1935	1	MARUKIKAI	
✓	✓	✓	1930	1	YAMAKAWA	OUT OF ORDER
✓	SPRING	0.5T	1940	3	✓	✓
✓	✓	✓	1943	2	KITAHARA	
PRESS	MACHINE		1940	5	MATUCHITA 2 EZAKI 1 ISIHARA 1 NIPPON 1	OUT OF ORDER
"	✓		1930	1	HIDACHI	✓
✓	OIL PRESS	300T	✓	1	KOHAN	
✓	✓	2000	1935	1	U.P.M. U.S.A	
"	FORK PLATE		1930	2	TOKYO BANKIN	
✓	✓		1935	3	TOKYO ROLL 2 NIPPON 1	OUT OF ORDER 1 NEED TO REPAIR 2
✓	✓		1940	6	MUNDA 1 NIPPON 2 TURAKAMI 1 NIPPON YOSETSU 2	OUT OF ORDER 1 NEED TO REPAIR 3
✓	✓		1941	1	NIPPONRIKA	NEED TO REPAIR
✓	✓		1943	1	DAIDO	✓
✓	✓		1930	2	NIPPON 1 FOREIGN 1	
✓	FRICTION		1940	1	FOREIGN	OUT OF ORDER
✓	✓		1935	1	IIDA	NEED TO REPAIR
✓	✓		1940	2	DAIDO 1 SUMITOMO 1	OUT OF ORDER
HEATING MACHINE	G U S S		1935	1	NIPPON	NEED TO REPAIR
WELDING MACHINE	ELECTRIC		1938	1	OSAKADENKI	
PLATING MACHINE	SHEARING		1935	1	GERMAN	
✓	RIVETING		✓	1	NIPPON	OUT OF ORDER
✓	WRING		1940	1	JAPAN	✓
✓	BANDING		1930	1	U.S.A.	✓
CRANE	OVER HEAD	10T	1935	1	NIPPON	✓

1135

PONTING			1940	1	DAID	OUT OF ORDER
CHAIN BLOCK		2T	1	2	NIPPON	

1136

No. 42 SHOP
AERO PLANE BRANCH

DESCRIPTION	TYPE	CAPACITY	YEAR OF MANUFACTURE	NO. OF UNITS	MAKERS	REMARKS
PRESS	FOR PLATE		1940	2	JAPAN. 1 BOSIN. 1	
	SHEARING		1935	1	FOREIGN	
TESTER	MATERIAL	5T	1941	1	OKAMOTO	
CRANE	OVER HEAD	30T, 5T	1942	1	YAMATO	

1138

No. 3 BOILER HOUSE
AERO PLANE BRANCH

DESCRIPTION	TYPE	CAPACITY	YEAR OF MANUFACTURE	NO. OF UNITS	MAKERS	REMARKS
BOILER	"TUNEYOSI"		1917	1	SANRYŪSHA	
DRILLING MACHINE	VERTICAL	TABLE DIA 500	1935	1	YOSIDA	
GRINDING MACHINE	TOOL		4	1	MIZUHO	

MURASAKI SHOP (2ND HIGH GIRL SCHOOL)
AERO PLANE BRANCH

1140

DESCRIPTION	TYPE	CAPACITY	YEAR OF MANUFACTURE	NO. OF UNITS	MAKERS	REMARKS
DRILLING MACHINE	VERTICAL	350	1924	1	SAWATAKE	NEED TO REPAIR
SHAPER		508	1930	1	JAPAN	OUT OF ORDER
METAL SAWING MACHINE	HIGH SPEED CUTTING	100	5	1	DUMBEY BROTHERS	NEED TO REPAIR
RIVETING MACHINE			1940	3	JAPAN	
AIR COMPRESSOR	H S D	PRESS 7 KG	1942	1	HIDACHI	NEED TO REPAIR

APPRENTICE SCHOOL

AEROPLANE BRANCH, AERO-ENGINE BRANCH

DESCRIPTION	TYPE	CAPACITY	YEAR OF MANU-FACTURE	N _{o.} OF UNITS	MAKERS	REMARKS
LATHE	AUTOMATIC	50 ^m	1919	1	FOREIGN	NEED TO BE REPAIR
"	THREAD CUTTING	3 st	1943	1	TSUGAMI	
"	GAP	"	1919	1	JAPANESE	OUT OF ORDER
"	"	8 st	1921	1	KEGAI	NEED TO BE REPAIR
"	"	4 st	1940	1	OKUMA	OUT OF ORDER
"	"	10 st	"	1	CHINESE	NEED TO BE REPAIR
"	"	12 st	"	1	"	
"	HORIZONTAL	170 ^m	1921	1	KEGAI	NEED TO BE REPAIR
"	"	4 st	1919	1	NIGATA	OUT OF ORDER
"	"	"	1921	1	ROKUROKU	NEED TO BE REPAIR
"	"	5 st	1940	1	JAPANESE	OUT OF ORDER
"	"	"	1935	1	CHINESE	NEED TO BE REPAIR
"	"	"	1919	1	"	OUT OF ORDER
"	"	8 st	1943	3	"	
"	SPECIAL	5 st	1945	1	JAPANESE	OUT OF ORDER
MILLING MACHINE	VERTICAL	No. 0	1943	2	ROKUROKU	NEED TO BE REPAIR
"	UNIVERSAL	No. 2	1940	1	CHINESE	"
"	"	No. 3	"	3	"	
"	PROFILE	450x700 ^m	1927	1	FOREIGN	
"	BENCH	"	1940	1	YAMAGISHI	NEED TO BE REPAIR
PRESS	PLATE	10 ^{KG}	"	2	CHINESE	
"	"	20"	"	15	"	1: NEED TO BE REPAIR
"	"	30"	"	14	"	1: OUT OF ORDER 2: NEED TO BE REPAIR
"	"	50"	"	5	"	
"	"	70"	"	7	"	1: NEED TO BE REPAIR
METAL SAWING	HACK SAW	100 ^m	"	1	"	OUT OF ORDER

1141

DESCRIPTION	TYPE	CAPACITY	YEAR OF MANU-FACTURE	No. of UNITS	MAKERS	REMARKS
METAL SAWING	HACK SAW	150 ^{m/m}	1921	1	JAPANESE	
"	HIGH SPEED	100"	1940	1	NIPPON-PASTICK	NEED TO BE REPAIR
GEAR SHAPER	HOB	24 ^{INCH}	"	1	CHINESE	
"	"	"	1935	1	"	OUT OF ORDER
SHAPER		100 ^{m/m}	1940	1	"	NEED TO BE REPAIR
"		150 ^{m/m}	"	1	FUJIWARA	"
PLANER			"	1	CHINESE	OUT OF ORDER
GRINDING MACHINE	UNIVERSAL	135X100 ^{m/m}	"	1	"	
DRILLING MACHINE	VERTICAL	560 ^{m/m}	1919	1	SINSINATY	OUT OF ORDER
"	MULTI		1940	1	JAPANESE	
"	BENCH		"	3	1: YOSHIDA 2: NEWDETA	NEED TO BE REPAIR
PRESS	SPECIAL		1921	1	CHINESE	OUT OF ORDER

KUROSE TUNNEL
AEROPLANE BRANCH

1143

DESCRIPTION	TYPE	CAPACITY	YEAR OF MANU-FACTURE	No. OF UNITS	MAKERS	REMARKS
MECHANICAL PRESS	CRANK	TON 20	1939 ~1942	17	CHINA	NEED TO BE REPAIR
"	"	"	"	2	"	
"	"	TON 35	"	1	"	
"	"	10"	1934 ~1942	2	"	
HYDRAULIC PRESS		100"	1937 ~1942	1	"	
"		250"	"	1	"	
AIR HAMMER		1/4"	1940 ~1944	1	SUMITOMO	
LATHE		6 st	1938 ~1942	1	HIRAO	
SHEARING MACHINE	CURVED EDGE			1	CHINA	
"	WHEEL EDGE			1	"	
"	STRAIGHT EDGE			1	"	
SHAPING MACHINE		12		1	"	
"		12	1939 ~1942	1	"	
METAL SAWING MACHINE	BAND SAW		"	2	"	
METAL PLATE FORMING PRESS	POWER WORK			2	DAIDO	
"	FOR BENDING			1	JAPAN	
"	HAND WORK			1	"	

AERO ENGINE BRANCH
No 1 SHOP (SECOND TUNNEL)

DESCRIPTION	TYPE	CAPACITY	YEAR OF MANUFACTURE	NO OF UNITS	MAKERS	REMARKS
GRINDING MACHINE	INTERNAL GRIN.	T-72	1942	9	TOYOKOGYO	3: NO MOTOR 1: BURN UP
"	"	72-A	1935	3	HEALD	2: BURN UP
"	"	200 ^{mm}	1945	1	IKIGAI	"
"	"	"	1944	1	"	"
"	"	CENTER HIGH 130 ^{mm}	1941	2	OKAMOTO	
"	"	T-81	1945	3	SHO-WASEIKI TOYOKOGYO	1: NO MOTOR
"	TOOL GRINDER	CENTER HIGH 100 ^{mm}	1930	1	EKUMA	NO MOTOR
"	"	"	1941	1	WASHINO	"
"	UNIVERSAL GRINDER	" 180 ^{mm}	1943	1	IMAIZUMI	"
"	PLANE GRINDER	" 100 ^{mm}	1935	1	CHURCHIL	
"	"	" 170 ^{mm}	1945	1	SHONAN-KOKI	BURN UP
"	"	" 180 ^{mm}	1943	1	"	"
"	"	" 160 ^{mm}	1940	1	HIDACHI	NO MOTOR
"	"	" "	1943	4	RIKEN	2: NO MOTOR
"	"	" 150 ^{mm}	"	2	HIDACHI TUGAMI	"
"	"	" 140 ^{mm}	"	2	HOKUSHIN DENKI	1: BURN UP
"	"	" 120 ^{mm}	"	1	"	
"	"	" 100 ^{mm}	1922	3	BROWNS SHARP	2: NO MOTOR 1: NEED TO BE REE.
"	"	" "	1943	1	HOKUSHIN DENKI	BURN UP
"	"	" 90 ^{mm}	1945	1	MITSUBISHI KOSAKU	
"	"	" "	1922	2	LANDLS	
"	"	" "	1935	2	"	
"	SURFACE (RING) GRINDER	" 350 ^{mm}	1940	1	HIDACHI	BURN UP
"	"	" "	1945	1	SANSHO SEISAKU	
"	" (HORIZONTAL)	500x1000 ^{mm}	1941	2	TOKYO-SEIKI GASUDEN	
"	SPRAIN GRINDER	BED 3200 H 200	1943	1	REINECKER	BURN UP

1144

DESCRIPTION	TYPE	CAPACITY	YEAR OF MANUFACTURE	NO OF UNIT	MAKERS	REMARKS
GRINDING MACHINE	GEAR LAP	H 350 ^m / _m	1935	1	FELLOWS	BURN UP
"	GEAR GRINDER (BEVEL)	" 400 ^m / _m	1945	3	OKAMOTO KOSAKU	1: BURN UP
"	" (")	" 400 ^m / _m	1933	4	"	
"	" (")	" 300 ^m / _m	1944	5	KEINECKER	1: NEED TO BE REPAIR 1: NO MOTER
"	" (SPUR)	" 200 ^m / _m	1935	2	HIDACHI-SEIKI	
"	" (")	" 300 ^m / _m	1942	1	OKAMOTO KOSAKU	
"	" (")	" "	1944	5	HIDACHI-SEIKI	
"	" (")	" "	1935	2	PRATT	
LATHE	COMMON	SHORT BED 4 FT	1944	1	RAISEINNO	NO SPINDLE 1: NO MOTER NO MOTER
"	"	" 2.5 FT	"	2	WASHING SEIKI	1: NO MOTER
"	"	" 5 FT	1943	1	IKEGAI	
"	"	" 6 FT	1927	1	TOKYO KIKAI	
"	"	" "	1935	1	KARATSU	
"	"	" "	1943	3	SHIMAMOTO HIRAO	1: NEED TO BE REPAIR
"	"	" "	1940	2	IKEGAI	
"	"	" 8 FT	"	1	KARATSU	
"	"	" "	1935	2	TOYO-KIKAI	
"	GAP	" "	1921	1	RIKEN	
"	"	" "	1935	2	JAPAN RIKEN	
"	COMMON	" 10 FT	"	1	RIKEN	
"	KOHAN No 400	" 6 FT	1944	1	KOHAN	
"	TURRET	WARNER 1-A	1926	4	WARNER	
"	"	GISHOLT No 3	1937	5	GISHOLT	
"	"	HIDACHI No 3	1940	12	HIDACHI	
"	"	" No 4	"	9	"	
"	"	" No 5	1943	4	"	2: BURN UP

DESCRIPTION	TYPE	CAPACITY	YEAR OF MANUFACTURE	NO. OF UNITS	MAKERS	REMARKS
LATHE	TURRET	ARFRED HERBERT No. 5	1940	1	ARFRED HERBERT	
GEAR SHAPER	BEVEL GEAR	400 ^{m/m}	1943	8	KARATSU, OSAKA KASEI SA REINEKER	4: NO MOTOR
"	"	400 ^{m/m}	1935	1	OSAKA MAIKAWA	
"	"	300 ^{m/m}	1943	3	KARATSU	
"	"	"	1920	1	GLEASON	
"	SPUR GEAR	FELLOWS No. 6 E	1943	4	TOKYO KIKAI	
"	"	HIGH SPEED	1942	2	"	NO MOTOR
"	"	"	1935	2	FELLOWS TOKYO KIKAI	
"	"	LOW SPEED	1919	2	FELLOWS	
"	"	"	1942	4	TOKYO KIKAI KARATSU	
"	HOBBLING	500 ^{m/m}	1938	1	BAKER, COLMAN	
"	"	"	1943	2	KASIFUJI	
"	" (VERTICAL)	450 ^{m/m}	1919	1	HERBERT	
"	" (")	"	1937	1	HIDEMASA	
"	" (HORIZONTAL)	250 ^{m/m}	1935	1	PFAUTER	1- NO MOTOR
"	" (")	100 ^{m/m}	1944	2	HAMAI	
"	SHAPER	600 ^{m/m}	1942	8	HOWA	2- NO MOTOR 1- BURN UP
DRILLING MACHINE	VERTICAL	370x540 ^{m/m}	1944	1	MITSUBISI	
"	"	530x670 ^{m/m}	1930	1	WORRESTER	
"	"	450x700 ^{m/m}	1930	1	BERNES	
"	"	350x400 ^{m/m}	1945	1	ROKUROKU	
"	"	600x800 ^{m/m}	1944	1	MITSUBISI	
"	"	550 ^{m/m}	1945	1	HIRAO	
"	MULTI		1943	1	MITSUBISI	
"	JIGU BORING	TABLE 0.8x1.5 ^m	1939	1	PRATI	BURN UP
"	"	TABLE 1.0x2.0 ^m	1942	2	GENEVOLDES	"

DESCRIPTION	TYPE	CAPACITY	YEAR OF MANUFACTURE	NO OF UNITS	MAKERS	REMARKS
DRILLING MACHINE	BENCH	300X400 ^{mm}	1942	1	NEW DELTA	NO MOTOR
MILLING MACHINE	HORIZONTAL	No. 2	1935	2	WAKAYAMA 1- HIDACHI	NO MOTOR
"	"	"	1943	2	HIDACHI BROWN SHEEP	NO MOTOR
"	"	HIDACHI F.	1943	1	HIDACHI	
"	"	TOYO F.	1936	1	TOYO KIKAI	
"	"	No. 3	1922	1	BROWN SHEEP	NO MOTOR
MILLING MACHINE	VERTICAL	No. 2	1943	1	HIDACHI	
"	"	"	1922	2	CINCINATI	
"	"	HIDACHI F.A.H	1940	1	HIDACHI	
"	"	MITUBISI VA 3.	1944	1	MITSUBISI	
"	UNIVERSAL	No. 2	1921	2	BROWN SHEEP	TOWA
"	"	"	1944	1	"	
"	"	No. 3	1938	1	CINCINATI	
SLOTTING MACHINE		150 ^{mm}	1935	1	PRATT	
"		170 ^{mm}	1945	1	KANEKO	
BROACHING MACHINE	VERTICAL	30 TON	1935	1	AMERICAN BROACH	NEED TO BE REPAIR
"	HORIZONTAL	15 TON	1935	1	ELBE WERKE	BURN UP
TESTING MACHINE	MAGNA FLAX.		1943	1	YOKOGAWA	"
"	HARDNESS	ROCKWELL 150KG	1939	1	TOBOSI SEIKI	
PRESSING MACHINE	HYDORLIC	10 TON	1940	1	SUZUKI	

AERO ENGINE BRANCH

PRODUCTION OFFICE (No. 5 TUNNEL)

DESCRIPTION	TYPE	CAPACITY	YEAR OF MANUFACTURE	No. OF UNITS	MAKERS	REMARKS
LATHE		BED LONG 6 FT	1925	1	WAKAYAMA	
↵		↵	1935	5	MATUHITA WAKAYAMA	No MOTOR
↵		↵	1937	1	WAKAYAMA	↵
↵		↵	1940	3	WAKAYAMA OSAKAKIKO	NEED TO BE REPAIR
↵		4 FT	1935	1	ROKUROKU	No MOTOR
↵		↵	1940	3	↵	↵
↵		8 FT	1925	1	WAKAYAMA	No HANDLE No MOTOR
↵		↵	1935	3	↵	No MOTOR
↵	TURRET (HORIZONTAL)	No. 3	1925	1	SYRACUSE	↵
↵	↵	↵	1935	1	TUJISI	↵
DRILLING MACHINE	VERTICAL	TABLE 5'00	1915	1	JAPAN	↵
↵	↵ (DOUBLE)	6'00	1925	1	INUI	↵
↵	↵	265X2,000	1915	1	JAPAN	DAMAGE
↵	↵		1925	1	U.S.A	(BURIAL)
↵	HORIZONTAL	No. 3	1940	1	↵	No. MOTOR
↵	BENCH	↵	1930	1	NISSHO SEIKI	↵
MILLING MACHINE	HORIZONTAL	No. 2	1920	1	BROWN SHERP	↵
↵	↵	↵	1935	2	TOYO KOGYO	↵
↵	↵	No. 3	1930	1	OSAKAKIKO	↵
↵	↵	↵	1939	1	YONEDA	↵
↵	↵	↵	1940	1	OSAKAKIKO	↵
↵	↵	No. 4	1935	1	FOREIGN	↵
↵	↵	No. 5	1930	1	HIDACHI	↵
↵	VERTICAL	No. 2	1935	9	WANPERER YONEDA TOYO KOGYO CINCINNATI	↵
↵	↵	↵	1940	1	TOYO KOGYO	↵
↵	↵	No. 3	↵	1	OSAKAKIKO	↵

1148

MILLING MACHINE	VERTICAL	No. 4	1930	2	BIERNA IMAZUMI	NO MOTOR
⌡	⌡	⌡	1935	2	TOYOKOGYO OSAKAKIKO	⌡
GRINDING MACHINE	INTERNAL	50	1940	1	FOREIGN	⌡
⌡	⌡	70	1940	2	TOYOKOGYO	NOMOTOR. I
⌡	⌡	100	1935	1	HEALD	NO MOTOR
⌡	SURFACE	1000	1925	1	THOMPSON	⌡

1149

AERO ENGINE BRANCH

NO. 1 SHOP (NO. 6 TUNNEL)

DISCRIPTION	TYPE	CAPACITY	YEAR OF MANUFACTURE	NO. OF UNITS	MAKERS	REMARKS
GRINDING MACHINE	TOOL	12 INCHES	1942	1	JAPAN	NO MOTOR
"	SURFACE (RING)	NO. 25	1935	1	HEALD	"
"	INTERNAL	350 ^{mm}	1941	1	TOYOKOJO	"
"	GEAR (INTERNAL)	HÖWA 600	1944	7	HÖWAJUKO	2 NEED TO BE REPAIR
"	"	"	1943	1	AMERICAN GEAR	NO MOTOR
"	GEAR LAP	400 ^{mm}	1942	1	OKAMOTO	"
"	CAM GRIND	500 ^{mm}	1944	2	FUJI	1 NEED TO BE REPAIR
"	"	"	1935	1	SHUMALTJ	"
"	"	450 ^{mm}	1942	1	MITUSBISHI	"
"	SUPPER FINISH	400 ^{mm}	1944	1	II NAVY YARD	"
LATHE	COMMON	12 FEET KOHAN	1935	1	ÖKUMA	
"	"	500	1943	1	TOYO KIKAI	
"	TURRET (HORIZONTAL)	NO. 5	1943	1	HIDACHI	
"	GAP	10 FEET	1927	1	WAKAYAMA	NO MOTOR
"	COMMON	4 FEET	1943	1	MITSUBISHI	"
"	"	"	1921	1	JAPAN	"
"	"	"	1943	1	RIKEN	"
"	"	6 FEET	1935	1	REED PRENTICE	NEED TO BE REPAIR
MILLING MACHINE	PROFILE (CAM)	600 ^{mm}	1936	1	KEINECKER	NO MOTOR
"	UNIT	"	1944	2	TÖA TEKKO	"
"	HORIZONTAL	NO. 2	1935	1	BROWN & SHERP	"
"	VERTICAL	NO. 3	1944	2	ÖSAKAKIKÖ	"
GEAR SHAPER	SPUR GEAR	NO. 6 Z	1944	3	TÖKYÖKIKAI	"
DRILLING MACHINE	VERTICAL	600x400	1944	1	ÖKUMA	"
"	"	MDA 3 500x400	1943	1	MITSUBISHI	"

1150

AERO ENGINE BRANCH

NO. 7 SHOP, NO. 1 SHOP (NO. 11 TUNNEL)

DISCRIPTION	TYPE	CAPACITY	YEAR OF MANUFACTURE	NO OF UNITS	MAKERS	REMARKS
TESTING MACHINE	CUBLETOR REGULATION TESTER		1945	1	MITSUBICHI	NO MOTOR
"	CUBLETOR AUTOMATIC REGULATION FUNCTION TESTER		1945	1	"	"
"	"		1944	1	"	"
"	"		1943	2	"	"
"	CUBLETOR TESTER		1945	1	"	"
"	FUEL INSTALLATION TESTER		1944	1	"	"
DRILLING MACHINE	VERTICAL	1000x600	1943	1	"	NO MOTOR
MILLING MACHINE	HORIZONTAL	NO. 4	1933	1	LOEWE	"
"	"	NO. 4	1935	1	GLEICHAUF	NEED TO BE REPAIR
"	"	NO. 3	1941	1	HIDACHI	NO MOTOR
"	VERTICAL	NO. 4	1942	4	"	"
"	"	NO. 4	1935	1	CINCINATI	"
"	"	NO. 3	1941	1	OSAKA KIKKO	"
"	UNIVERSAL	NO. 4	1927	1	ROKUROKU	NEED TO BE REPAIR
GRINDING MACHINE	TOOL	DOUBLE HEAD 12"	1943	1	JAPAN	

1151

AERO ENGINE BRANCH

NO. 1 SHOP (NO. 13 TUNNEL)

DISCRIPTION	TYPE	CAPACITY	YEAR OF MANUFACTURE	NO. OF UNITS	MAKERS	REMARKS
LATHE	GAP	LONG BED 10 FEET	1932	1	OKUMA	NO MOTOR
"	"	"	1941	1	"	"
"	"	"	1944	2	SHOUN	
"	COMMON	SHORT BED 4 FEET	1944	1	mitsubishi	NO MOTOR
MILLING MACHINE	VERTICAL	NO. 2	1944	2	OSAKA KIKKO	"
"	"	NO. 2	1937	2	CINCINATI	
"	"	NO. 3	1944	1	HIDACHI	
"	"	NO. 3	1937	2	CINCINATI	
DRILLING MACHINE	MULTI	650x950	1937	2	DALE	
"	HORIZONTAL BORING	NO. 47A	1937	1	HEALD	
"	MULTI	35-12	1943	1	mitsubishi	NO MOTOR
"	B-5	TABLE AREA 500x800	1938	1	"	"
"	HORIZONTAL BORING	NO. 47A	1937	1	HEALD	
"	VERTICAL MULTI		1929	1	FOREIGN	
PRESSING	MACHINE	1.6 TON	1944	1	OSAKA JUKO	NO MOTOR
"	HAND	NO. 2	1940	1	JAPAN	
TESTING MACHINE	BALANCING		1937	1	KAWANISHI	
MAGNA FLAX	MAGNET	3HP	1937	1	YOKOGAWA	
GRINDING MACHINE	INTERNAL	T-74	1944	2	TOYOKOYO	NO PUMPING MOTOR
"	"	#127	1937	1	HEALD	"
"	SURFACE	1000x600	1937	1	SHUTTY ALFRED	
"	HORSE SHOE TYPE	SIMPLE	1937	1	OSAKAKIKAI	
"	TOOL GRIND	UNIVERSAL	1941	1	WASHINO	NO MOTOR
HONING MACHINE	VERTICAL	450x3HP	1937	1	FOREIGN	

1152

No. 20. TUNNEL
 AEROENGINE BRANCH

1153

DESCRIPTION	TYPE	CAPACITY	YEAR OF MANUFACTURE	No. OF UNITS	MAKERS	REMARKS
DRILLING MACHINE	BENCH		1930	1	JAPAN	NEED TO BE REPAIR
"	VERTICAL	400 ^{MM}	1935	1	"	
GRINDING MACHINE	HORIZONTAL	1500X500 ^{MM}	"	1	"	NEED TO BE REPAIR
SCREW CUTTING		10 ^{MM}	"	1	"	
PRESS	OIL	2 ^{TON}	1945	1	SUZUKI	NEED TO BE REPAIR
"	FOR PLATE		1935	1	JAPAN	
"	"		1940	1	"	
LAPPING WRAPPING MACHINE	VERTICAL	DIA 150 ^{MM}	1930	1	"	NEED TO BE REPAIR

AERO ENGINE BRANCH

NO. 4 SHOP (NO. 23 TUNNEL)

1154

DESCRIPTION	TYPE	CAPACITY	YEAR OF MANUFACTURE	NO OF UNITS	MAKERS	REMARKS
LATHE	COMMON	8 FEET	1941	1	TOYOKIKAI	NO MOTOR
"	"	6 FEET	1944-1937	10	KARATSU, IKEGAI HOKURIKU	9; NO MOTOR 1; NEED REPAIR
"	"	4 FEET	1937-1944	3	KIKIUKIKAI HAMAI	NO MOTOR
"	"	3 FEET	1941	7	RIKEN	ALL NO MOTOR 2; NEED REPAIR
"	GAP	5 FEET	1940	3	OKUMA	NO MOTOR
"	THREAD CUTTING		1939	1	RIKEN	NO MOTOR
"	BACK OFF	230 ^{mm}	1944	1	AKIMOKU	
"	"	280 ^{mm}	1944	1	"	
"	"	250 ^{mm}	1944	1	TOYOKIKAI	
"	"	270 ^{mm}	1940	1	SAWATAKE	NO MOTOR
"	"	200 ^{mm}	1940	1	OKAMOTO	"
"	TURRET	NO. 3	1940-1943	7	TOYOKIKAI, HIDACHI, KIRI, OKUMA	5; NO MOTOR
"	"	NO. 1	1945	12	DAI NIPPON KOKI	ALL NO MOTOR
MILLING MACHINE	VERTICAL	NO. 2	1937-1942	3	GASU DENKI, HIDACHI, CINCINATI	NO MOTOR
"	HORIZONTAL	NO. 3	1940-1944	7	IKEGAI, HIDACHI, IWASA	4; NO MOTOR 2; NEED REPAIR
"	"	NO. 2	1943	1	HIDACHI	NO MOTOR
"	"	NO. 0	1943	1	RIKEN	"
"	UNIVERSAL	NO. 2	1940	1	BROWN S SHARP	"
"	"	NO. 0	1940	1	"	"
"	BENCH		1943	2	JAPAN	NO MOTOR
GEAR CUTTING MACHINE	HOBBIING	500 ^{mm}	1937	1	WING HON IRON	"
GRINDING MACHINE	SURFACE (HORIZONTAL)	500 ^{mm}	1941	1	TOKYO SEIKI	"
"	SPUR GEAR	300 ^{mm}	1937	1	MAAG	"
"	"	500 ^{mm}	1937	1	NIHATA	
"	THREAD GRIND	300 ^{mm}	1941	1	TSUGAMI	NO MOTOR
"	"	300 ^{mm}	1942	2	JOHN & LAMSON	"
"	"	250 ^{mm}	1939	1	EXCELLO	"

GRINDING MACHINE	FELLOWS CUTTER GRINDER	100 ^{MM}	1944	3	MITUBISI	NO MOTOR
4	4	4	1939	1	OKAMOTO	4
4	4	4	1943	2	4	4
4	4	30 ^{MM}	1944	2	DAIDO	4
4	LEAD GRAINDER	150 ^{MM}	1939	1	BARBAR CORMAN	4
4	BRANCH GRAINDER	160 ^{MM}	1943	1	RAINÆKKER	4
4	GAUGE GRAINDER		4	1	STYDER	4
4	TOOL GRAINDER		1940	2	MIZUHO	4
4	4		1943	1	SEIKENKI	4
4	FLOWING GRAINDER		4	1	STYDEROP	4
4	4		1944	3	WASINO	4
SHAPING MACHINE	SHAPER	650 ^{MM}	1941	1	OKUMA	4
METAL SAWING MACHINE	HIGH SPEED CUTTING OFF	-	1940	1	NIHONSETUDANKI	4
ROLLING MACHINE	SCREW ROLLING MACHINE	8 ^{MM}	1944	1	JAPAN	4
HEATING FURNACE	ELECTRIC	0.012 ^{M³}	1939	5	DENGENSHA	
4	4	0.015 ^{M³}	1941	1	TAKEMOTO	NO NICHROME WIRE
WELLING MACHINE	4	90 ^{MM²}	1943	1	DENGENSHA	
4	4	30 ^{MM²}	1937	1	OSAKADENKI	
PRECIA MEASURING INSTRUMENT	GEAR TESTER		1941	1	CARLWILHE	NO ACCESSORICE
4	TOOTH FORM CURVE TESTER		1940	1	NAVY YARD	4
4	FINISHING SURFACE INSPECTER		1944	1	NIHONKOGAKU	4
4	COMPARATOR		1938	1	JONRAMSON	4
4	TOOTH FORM MEASURING		1940	1	JAPAN	4
4	ELECTRIC MICROMETER		4	3	R.P.C. 1 TERAUKASEIKOZ	4
4	INVOLUTE CURVE TESTER		4	1	NAKASIMA	4
4	LENGTH MEASURING		4	2	SIP KURODAKISHAN	4
4	ANGLE MEASURING		4	1	TUGAMI	4

DESCRIPTION	TYPE	CAPACITY	YEAR OF MANUFACTURE	NO. OF UNITS	MAKERS	REMARKS
PRECIA MEASURING INSTRUMENT	ECCENTRICITY MEASURING		1940	1	FELLOWS	NO ACCESSORIES
"	MEASURING		1940	1	ENGLAND	"
"	"		1940	1	JAPAN	"
"			1940	1	KURODA	"
TESTING MACHINE	HARDNESS		1941 1945	2	TOGOSHI TOKYOKOKI	NO DIAMOND
RULE PLATE		3x500 ^{m.m}	1940	1	JAPAN	
TRANSFORMER		3,100KVA 1,220KVA	1937~ 1939	4	MEIDENSHA OSAKAHENATSU	
"		20.5KW	1935~ 1939	4	3, DENGENSHA 1, SHIVAURA	
BLOWER	VERTICAL	700 ^{m.m}	1939	1	JAPAN	NO MOTOR
"	"	500 ^{m.m}	1945	2	MITSUBISHI	

No. 21, No. 22 TUNNEL
AEROENGINE BRANCH

DESCRIPTION	TYPE	CAPACITY	YEAR OF MANUFACTURE	No. OF UNITS	MAKERS	REMARKS
LATHE		10 st	1933 ~1946	3	OKUMA	
"		"	"	1	IKEGAI	
"		"	"	1	MAGDEBURG	
"	GAP	"	"	3	2: MITSUBISI 1: IKEGAI	
"		8 st	"	1	FUJI	
"		"	"	9	MITSUBISI	
"		"	"	1	GAJUDENKI	
"		"	"	3	OKUMA	
"		"	"	1	KARATSU	
"		"	"	2	OSAKA	
"		"	"	2	SINAGAWA	
"		"	"	2	HIRAO	
"		"	"	3	HOKURIKU	
"		"	"	4	IKEGAI	
"		6 st	"	4	OKUMA	
"		"	"	1	JAPAN	
"		"	"	1	HIRAO	
"	GAP	8 st	"	1	OSAKA	
BORING MACHINE	HORIZONTAL	30X1450 ^{MM}	"	1	LEAS MACHINE CO.	
"	"	"	"	1	KARATSU	
"	"	"	"	1	WAKAYAMA	
"	"	"	"	1	IKEGAI	
DRILLING MACHINE	RADIAL	1700X1800 ^{MM}	"	2	SINSINATY IKEGAI	
"	APPLIED	25	"	1	ROKOROKU	
"	SENSIBLE		"	1	JAPAN	
GRINDING MACHINE	SURFACE	1000 ^{MM}	"	2	BLANCHARD Tokyo	

1157