

陸軍運輸部

19
吳地方第二五號

昭和二十年十二月十日

各關係各艦長
長
殿

吳地方復員局總務部長

2
2

武裝解除ニ關スル件申進

一 武裝解除實施細則紙ノ決定ノラル

二 吳地方ニ入港スル艦船ノ武裝解除ハ入港後二十四時間以内ニ完了ヲ要ス

三 從來吳地方復員局擔任海面在泊艦艇ニシテ武裝解除不充分ノ爲ニ艦艇重

ナル進告ヲ受ケ問題ヲ惹起シツツアル處斯テハ武裝解除履行ニ關スル我

ガ方ノ誠意ヲ疑ハレ各方面ノ折衝甚他ニ影響スル所甚大ナルヲ以テ眞劍

ニ勵行セラレ度

四 武裝解除ニ付テハ各地方毎ニ實施要領検査ノ方法等ニ差異アリ例ヘバ橋

須智、佐世保、舞鶴等ニ於テ検査完了ノ艦艇モ長ニ於テハ不合格ト判決

セララルモノ極メテ多キ實狀ニ鑑ミ從來問題トサレタル事項ヲ集録シ武

裝解除標準ヲ定メラレタル次第ニ付此ノ點特ニ留意ノ上他地方ニ於テ又

0658

ハ過去ニ於テ終了セルト否トヲ問ハズ特ニ入念ニ管施シ遺算ナキヲ期セ
ラレ度

寫送付并
第二復員省總務部
各地方復員局總務部長

一終

0659

武装解除實施標準

- 一 砲及爆雷投射装置 尾栓ヲ撤去
- 二 機銃 撤去
- 三 射撃指揮装置 電源及配電盤ヲ撤去且總テノ方位盤手動装置ヲ破壊部分品ヲ撤去
- 四 探照燈管制装置 部分品ヲ撤去
- 五 發射管時計ヲ得次第陸揚スルヲ取取ヘズ
- 六 機雷運搬軌道工廠或ハ端側ニ於テ一部ヲ破壊
- 七 航空母艦ノ拘束装置ヲ撤去

0660

大正復讐第二五號

昭和二十年十二月十日

吳地方復員局總務部長

關係各艦長殿

武裝解除ニ關スル件申進

一 武裝解除實施標準別紙ノ指定ヲラル

二 吳地方ニ入港スル艦船ノ武裝解除ハ入港後二十四時間以内ニ完了ヲ要ス

三 從來吳地方復員局擔任海面在泊艦艇ニシテ武裝解除不充分ノ爲ニ屢嚴重

ナル通告ヲ受ケ問題ヲ惹起シツツアル虞斯テハ武裝解除履行ニ阻スル我

ガ方ノ誠意ヲ疑ハレ各方面ノ折衝甚他ニ影響スル所甚大ナルヲ以テ眞劍

ニ勵行セラレ度

四 武裝解除ニ付テハ各地方毎ニ實施要領検査ノ方法等ニ差異アリ例ヘバ橋

須賀、佐世保、舞鶴等ニ於テ検査完了ノ艦艇モ吳ニ於テハ不合格ト判決

セララルモノ極メテ多キ實狀ニ鑑ミ從來問題トサレタル事項ヲ集録シ武

裝解除標準ヲ定メラレタル次第ニ付此ノ點特ニ留意ノ上他地方ニ於テ又

尾崎 嘉三郎

20/2/13

0661

ハ過去ニ於テ終了セルト否トモ同ハズ生ニハ念ニ加シ道徳ヲキメ期ヤ
ラレ度

寫卷付并
第二復員省總務部長
各地方復員局總務部長

一終

0662

武装解除實施標準

- 一 砲及擧管投射装置 尾栓ヲ撤去シ揚
二 機 銃 撤去シ揚 一 砲 架ヲ含ム
- 三 射撃指揮装置
電源及配電盤ヲ撤去且總テノ方位盤手動装置ヲ破壊部分品ヲ撤去シ聯
装置ヲ破壊作動不能トス
- 四 探照燈管制装置
部分品ヲ撤去シ揚 聯装置ヲ破壊作動不能トス
- 五 發射管時秒ヲ得次第降揚スルヲ取取ヘズ
發射弁、起動釣装置ヲ降揚旋回装置ノ回轉部分ヲ破壊又ハ撤去
- 六 機雷運搬軌道工廠或ハ船側ニ於テ一部ヲ破壊撤去使用不能トス
- 七 航空母艦ノ拘束装置ヲ撤去

(終)

0663

19

部

部

部

第七七號

千九百四十五年十二月二十二日

庶務主任

發 米海軍日本船舶統制官 ハレット海軍少佐
宛 吳地方復員局前任連絡官

關連文書(A)米海軍日本船舶統制官發第七十六號 (十二月二十日附)

備日本海軍艦艇武裝未濟ノ件

一、米海軍検査官ガ過去一週間内ニ發見セシ備日本海軍艦艇ノ武裝未濟箇

所在ノ如シ

艦 船 名	未 濟 箇 所	處 置
海防艦對馬	探照燈管制裝置元ノ如シ	主要部分撤去ノコト
驅逐艦花月	射撃指揮裝置用配電盤元ノ如シ	撤去ノコト
夏月		
巡洋艦北上	K砲二基尾檢ヲ有ス	尾檢撤去ノコト
驅逐艦椿	發射管旋回裝置撤去ノコト	旋回裝置撤去ノコト
楡	方位盤元ノ如シ	主要部分撤去ノコト

海軍

(一六一三 永井稿)

0664

海防艦四八號

小銃七挺同彈藥六〇〇〇發アリ

小銃五挺同彈藥五〇〇〇發
撤去ノコト

三、右記

ノ如キ未済ハ本統制官及第五十五機動部隊第三群指揮官ヨリノ
日本海軍艦艇武装解除ニ關スル指令ニ違反スルモノナリ

三、撤去可能物件ハ副連文書(A)ノ示ス處ニヨリ米陸軍當局ニ引渡スベシ

過剩ノ小銃及彈藥ハ之ヲ撤去ノ後掃海艇用トシテハ一艦艇許容數銃器

二艇彈藥五〇〇發)復員局當署者ニ保管セシムベシ

四、右ノ處置施行後ハ文書ヲ以テ本艦ニ通報ノコト

(終)

(二六一三 永井納)

海軍

0665

Serial 77

22 December 1945.

FROM: U.S. Navy Control officer for Japanese shipping.
TO : Chief Liaison official, Kure Local Repatriation bureau.
SUBJECT: Demilitarization of Japanese Vessels - Discrepancies in.
REFERENCE: (a) U.S. Navy Control office for Japanese shipping serial 76 of 20 December 1945.

1. Recent inspections of Japanese ex-Naval vessels by U.S. Navy inspecting officers during the past week have revealed the following discrepancies:

Name	Discrepancy	Recommendation
(a) Es. Tsushima	- Searchlight director intact.	Remove essential
(b) DD Hanazuki	- Fire control switch-board intact.	Remove
(c) DD Nakazuki	- fire control switch-board intact.	Remove
(d) CL Kitagami	- 2 K-guns with breech blocks.	Remove breech blocks.
(e) DD Taubaki	- Training gear of torpedo mount operable.	Remove training gear.
(f) DD Nire	- Gun director intact	Remove essential parts.
(g) Es. 48	- 7 rifles, 6000 rounds ammunition aboard.	Remove 5 rifles, 5000 rounds.

2. All of the discrepancies listed above are in violation of previous directives from this office and from Commander Task Group 55.3 regarding demilitarization of Japanese ex-Naval vessels.

3. Removable equipment will be turned into U.S. Army authorities in accordance with reference (a). Excess rifles and ammunition are to be removed and placed under the protective custody of Japanese ex-Naval authorities for use in maintaining the rifles and ammunition allowance of minesweepers at the prescribed amount of 2 weapons and 500 rounds of ammunition.

海軍 14

0666

4. It is requested that this office be notified by memorandum when the above recommended measures have been carried out.

E.T. Barrett
Lt. Comdr. USN

海

軍

0667

アジア歴史資料センター

Japan Center for Asian Historical Records

<http://www.jacar.go.jp/>

一九四五年十二月二十日

陸海軍少佐

海軍少佐

陸海軍日本統制官
宛 奥地方復員局連絡官

日本海軍機装物件搬去要領

- 一、前回文書ニ依リ日本海軍艦艇ヨリ搬去セシ兵器ハ米國艦車當局ヨリ受取證ヲ取リテ之ヲ小官ニ廻附スルヤウ指令シ置キタリ
- 二、左ノ事項ハ右ノ指令ニ違反セルモノナリ
- （イ）青葉及柳ノ機装品ハ元海軍工廠總務部ニ送付セラレ十一月三十日開所ニ放置セラレタル儘テ現在ニ及ベリ
- （ロ）小官ハ未ダ該軍代表者ノ署名アル受取證ヲ受領シ居ラズ
- （ハ）機装品ハ時々受取證ヲ受領スルコトナク第四船渠ノ該軍代表者ニ引渡サレアリ
- 三、小官ノ指令ノ實施ヲ便ナラシムルタメ次ノ如ク規定ス
- （イ）搬去品目ヲ列記セシ受取證ノ第三通ヲ作り之ヲ搬去セラレタル艦艇ニ渡スコト

（二六一三 永井節）

海軍

0668

(四) 右ノ受取證一通ト販去物件トヲ第四船渠ノ米陸軍代表者ニ廻付シテ

受取證ニ署名セシムベシ

(ハ) 受取證ノ原文ヲ小官ニ寫一通ヲ米陸軍代表ニ渡スト共ニ寫一通ヲ手

許ニ保存スベシ

四本指令ハ之ヲ直ニ實施スベシ

(受取證、見本添付)

(終)

海軍

0669

Serial 76

20 December 1945

From: U.S. Navy Control Officer for Japanese Shipping.
To: Chief Liaison Official, Kure Local Repatriation Bureau.
Subject: Japanese Naval Equipment, Standard Procedure for Turning in.

Enclosure: (A) Sample Memorandum Receipt.

1. In previous correspondence, you have been directed to obtain a receipt from U.S. Army authorities for military equipment removed from Japanese Naval vessels, and deliver said receipt to me.

2. The following evidence indicates that you are not complying with those orders:

- (a) Equipment from Aoba and Kaba was taken up to the Ex-Kure Navy Yard H.Q. and deposited there on 30 November. It is still there.
- (b) I have never received a signed receipt signed by a U.S. Army representative.
- (c) Equipment is occasionally turned in to the Army Representative at Drydock No. 4 without receiving a receipt for same.

3. To assist you in carrying out my orders, the following procedure is prescribed:

- (a) Make up three copies of receipt listing material to be turned in a ship from which removed.
- (b) Take receipt and material to the Army Representative at Drydock No. 4, and have him sign the receipt.
- (c) Return the original of the receipt to me, give one copy to the Army Representative, and keep one for your own files.

4. It is directed that this procedure be instituted immediately.

E.T. BARRETT,
Lt. Comdr.,
U.S. Navy.

Copies to:
Lt. Matier, 41st. Inf.,
Drydock #4
G-4, 41st. Div.
K.L.R.B.

0670

部員
地方復員局艦船運航部長

総務課長

九州地區廢毀（決定）艦船一覽表 佐世保地方復員局艦船運航部

庶務主任

艦船
21.1.28
部航運

所 在 艦 種	艦 名	狀 況
航空母艦	隼鷹、笠置、伊吹	印未完成
驅逐艦	蒼風	
海防艦	三九、三〇三、三〇四、笠戶、時戶	
掃海艦	一七	
輸油艦	一九、二〇、二三、五二	
	イ 三六、四七、五三、五八、一五六、 二〇二、三六六、三六七、四〇二、 二〇三、三六八、三五九、一五六、 一五七、一五八、一五九、一六〇、 一六一、一六二、一六三、一六四、 一六五、一六六、一六七、一六八、 一六九、一七〇、一七一、一七二、 一七三、一七四、一七五、一七六、 一七七、一七八、一七九、一八〇、 一八一、一八二、一八三、一八四、 一八五、一八六、一八七、一八八、 一八九、一九〇、一九一、一九二、 一九三、一九四、一九五、一九六、 一九七、一九八、一九九、二〇〇、 二〇一、二〇二、二〇三、二〇四、 二〇五、二〇六、二〇七、二〇八、 二〇九、二一〇、二一一、二一二、 二一三、二一四、二一五、二一六、 二一七、二一八、二一九、二二〇、 二二一、二二二、二二三、二二四、 二二五、二二六、二二七、二二八、 二二九、二三〇、二三一、二三二、 二三三、二三四、二三五、二三六、 二三七、二三八、二三九、二四〇、 二四一、二四二、二四三、二四四、 二四五、二四六、二四七、二四八、 二四九、二五〇、二五一、二五二、 二五三、二五四、二五五、二五六、 二五七、二五八、二五九、二六〇、 二六一、二六二、二六三、二六四、 二六五、二六六、二六七、二六八、 二六九、二七〇、二七一、二七二、 二七三、二七四、二七五、二七六、 二七七、二七八、二七九、二八〇、 二八一、二八二、二八三、二八四、 二八五、二八六、二八七、二八八、 二八九、二九〇、二九一、二九二、 二九三、二九四、二九五、二九六、 二九七、二九八、二九九、三〇〇、 三〇一、三〇二、三〇三、三〇四、 三〇五、三〇六、三〇七、三〇八、 三〇九、三一〇、三一〇訓	潜水艦 二二八、二二九

0671

武装解除抵抗文、対して国策文、

班長

田

海

一九四五年十月二十九日附貴官ヨリ通知ノ日本艦船武装解除不完全ノ件ニ關シ下記ノ通實施致候

追而爲シ得レバ十一月一日右艦船ニ對シ査閲ヲ實施セラルレバ好都合ナリ當方ニテ案内致スベク候

一 海防艦二一七號及七七號

二 米測巨儀ハ掃海用トシテ必要缺ク可カラザルニ付殘置ヲ許可セラレ度右以外三十一日迄ニ完全ニ實施ス

三 海防艦三宅

尾栓ハ十月十六日中ニ撤去陸揚セリ

其他ハ二十九日中ニ完全ニ實施ス

四 海防艦六〇號、八一號、一五八號探照燈管制器ハ二十九日中ニ完全ニ

使用不能トス「E」式砲ハ全部陸揚完了 一五八號海防高射裝置ヲ三

十一日迄ニ陸揚スル外撤去完了

四 筈 面

遺送用トシテ使用ノ爲使用スルニツキニ米測巨儀、探照燈ノ殘置ヲ許

海軍

0673

可セラレ度 管制装置ハ直ニ使用不能ノ状態ニ實施セリ

宛 「ピロタン」艦長 米海軍大佐 「ブラツクレヂ」

發 吳海軍連絡將校 磯部大佐

揚子艦隊 少佐 保田有作

海軍

0674

0674

運艦隊

發

第五十五特別任務部隊第三群指揮官

(廣、松山地區最高指揮官マテイラ大佐)

宛

第五十二特別任務部隊第七群指揮官

(掃海部隊)

通報

松山港務監理官

第二三一七四〇番電

貴官ハ第七十六號、一〇四號、一五四號海防艦ニ對シ文書第一一號ニ依リ許可サレタル數量補充ノタメ押收セル武器彈藥ヲ可及的速ニ松山港務監理官ヨリ受領スル如ク指令スベシ

(終)

海軍

0675

3
111
CL91/A4-3/A9

17 Nov 1945

Serial: 3

From: The Commander Hiro - Matsuyama
Area Group (Commander Task Group
55.3).

To : The Japanese Naval Liaison Officer,
Kure.

Subject: Control of Japanese Vessels in the
Hiro - Matsuyama Area.

1. As Area Commander and Senior Officer Present Afloat, I am required by the instructions of the Supreme Commander of Allied Powers to maintain control of the Japanese vessels in the Hiro - Matsuyama area by establishing a system of surveillance and inspection to verify their compliance with directives of the United States occupation authorities.

2. You are directed to furnish the following:

- (a) A complete daily list of all Japanese Naval vessels and all Japanese Merchant vessels over 100 tons in the Hiro - Matsuyama area showing their present location.
- (b) A daily list of all arrivals and departures showing the authority therefor.
- (c) A list of the number of officers and men aboard each ship and prompt report of any change in the personnel aboard any ship.
- (d) A list of showing the designation and strength of any Naval unit demobilized.
- (e) Provide a Naval Officer of the rank of Commander or above with a competent

海

軍

六二六三永井納

0676

interpreter to accompany my representative on such inspections as he may desire to make.

- (f) Inform all vessels mentioned in paragraph (a) above that they will undertake no movement or make any change in their status without my prior knowledge and consent, or as ordered by my representative, unless directed by other responsible authorities.
- (g) Furnish any small boating and automobile transportation as required by my representatives in the execution of this assignment.

3. Commander H. von A. BURKART, U.S. Navy has been detailed as my representative and he will arrive at the Kure Naval Station daily to receive the above reports for me and make such inspections and changes as he deems necessary.

D. L. MADEIRA.

Copy to:

CTF 51
ComGenXthCorps
CTG 50.3
ComDesRon 63
Port Director, Kure
ComServDiv 103 Rep., Kure

海

軍

(六十三永井納)

0677

旧逸仙(ア) 45

土回 1-3-1
北設計 1-3-1
企劃課 1-3-1
本航 1-3-1
計 8

重心試験用バラスト並試験要領

註

一 試験期日 昭和二十一年四月 日(月日直列)

場所 吳港内繋留位置

二 試験準備

- (一) 二十五吨製「バラスト」三屯ヲ下舷十五屯宛上甲板ニ搭載スルコト(計一五〇本)
- 但レバラスト台ハ別ニ設ケ不適宜敷板ヲ施工スルコト

(二) バラスト台及下舷位置ハ現場立合ヒ上決定スルヲ要ス

(三) 試験當時ニ於ケル各シツク内現在量並念慮内重量物ヲ調査上企劃課設計係宛通知スルコト(本艇)

三 試験要領

(バラスト移動ハ概テ四回ヤルモ詳細ハ試験時ニ決定ス)

- (一) 試験開始
- (二) 待テ(基準入シ方)
- (三) 其ノ場ニ休メ(バラスト移動)
- (四) 待テ(ヤガ權ヲ移動量計測)
- (五) 試験終了(解散)

上甲板



0678

165

中 ^m

○ 51 . 400T 37^m 8^m
 (早瀬) 3-7 柳 治
 眼長 心 和 治 ?

17 300T 37^m 6^m ?

○ (三峯) 岩 女 治 三 治
 眼長 岩 女 治 三 治

○ 阿多田 1440 T 90^m 9^m
 指揮 後 作 同 美 途
 59'40

類 早瀬 16 (銀以下全名)
 三峯 13 (13 C)

0679

運航部

吳復運弄一〇號、一一三
昭和二十一年四月二十三日

阿多田回航指揮會 作間英通

部 長

行動豫定
阿多田相生間回航實施計畫

四月二十六日〇七〇〇 吳出港
四月二十八日午前 相生入港 (越灘及播磨灘澁海)

總務課長

豫定航路

那沙美、來島、井島水道通過 別表、通

部 員

三、使用曳船

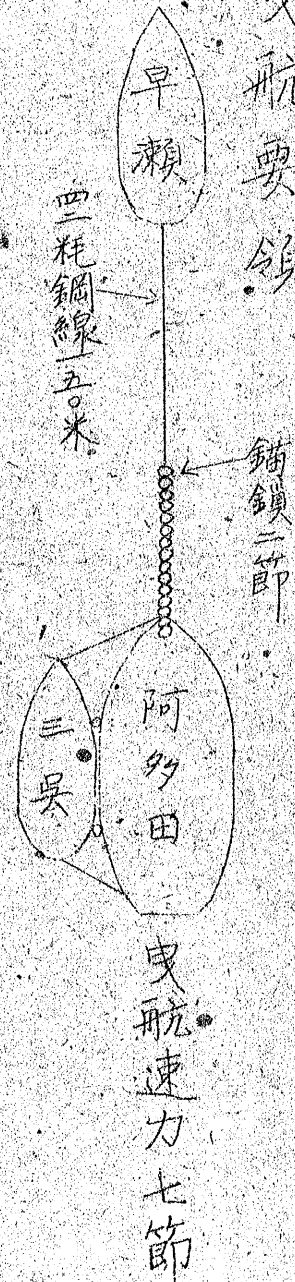
四〇噸曳船 (早瀬) 二隻
三〇噸曳船 (三吳) 一隻
最大速力 十三・五節
十二節

四、曳航準備

別二定ル所ニ依リ四月二十五日迄完成スルモノトス
但阿多田揚錨機ハ使用不能

0680

五、曳航要領



六、保

安全ヲ第一義トシ突發事項ニ對シテ其都度指示ス

七、通

曳船被曳船間通信ハ手旗及規約信號ニ依ル

八、其

指揮官ハ阿多田ニ乘艦ス

(終)

0681

吳復英又ニノ號

昭和二十一年六月二十八日

庶務主任

吳地方復員局總務部長

佐伯掃海部長殿

部長

寫

舟艇轉籍の件通知

佐伯掃海部所屬舟艇（除掃海艦艇）は七月一日附左の通轉籍の事に定められた

總務課長

部員

備考「カツカー」三隻は内務省に移籍するものとする

船種	隻數	轉籍先	記
内火艇	三	關門運航部	第二内火艇
大艇	三	同右	
内火艇	一	吳地方復員局	第一内火艇
汽艇	一	同右	

寫送付先

關門運航部長
吳船運航部長

船務部
216.28
部航運

0682

海軍航空部長

昭和二十一年七月四日

昭和二十一年七月四日

呉地方復員局運航部港務課長

呉地方復員局総務部沖原事務官殿

非公式接收「カッター」返却方

接衝の件依頼

当課保管艦中の「楡」及高根搭載の「カッター」各一隻は左記の通進駐軍に依り非公式に接收せらる職責上甚だ遺憾に付き関係進駐軍に返却方御取計下さい

記

(楡のもの)

六月十日エロロ頃元魚雷調整場に駐屯の進駐軍七名は陸岸より泳ぎ来り上甲板中部に搭載中のもの

海軍

0683

き持帰りたり

(高根のもの)

六月二十四日夜間(時刻不明)港務課保管艦
羽節艦尾に繫留中 盗難に逢ひ以未極力搜索中の
処元臭雷調整場に陸揚がしあるを發見せり

(終)

寫送付先 吳地方復員局運航部

(竹秀納)

海

月

0684



運航部

部長

課長

部員

庶務主任



昭和二十一年七月十一日

運航部 課長

運航部 部長

港月の業務解除に関する件

昭和二十一年七月十日附呉港擔任直代理とロストロシヤ中隊よきま
りりる宛の首題の件に関する報告に對し別紙の通り進めます

(別紙) (添)



0685

海軍

海軍の兵器開発計画

海軍

昭和二十一年五月二十九日米海軍中佐マヨライムソンの訪問報告
で行った兵器及機材は左の如し

一 射撃機材

(1) 高射機は分解の上岸上で海中投棄

(2) 射撃機は中味を分解の上岸上で海中投棄し機は別の代用として使用してゐる

(3) 射撃機は水中機及遠程機全部海中投棄

二 水雷科機材

(1) 水雷機全部海中投棄

三 水雷機材

(1) 水雷機材の上岸中投棄

海軍

設備のみ増し使用してゐる。

海外開港場無線電

「マリーム」及「平味」の一部を増し増し増しは設備の上増中設備

例題高周波無線電機（水〇式、九五式無線電機）全部増中設備

但し部品の一部は他に流用中

九五式無線電機用のマリーム及抵抗機が幾つてゐる

内線無線電機

無線のみ増し増中設備

九五式無線電機

増設増設機

増設に對し今回追加する工事

日本郵政省無線電機は陸軍共済部制の各一海は増設し設備は増設機

に増設する、右の外平用の留取及目録等を取り外す

海外開港場無線電

海軍

「フレーム」等残存部は完全に検査す。

九五式無線電機用「ー」及「抗器」は完全に検査す。

約探照燈管制機の機軸は補給部に送納す。

約電線及九五式無線電機用導線管は検査す。

馬工事実施期日

七月十五日一三〇〇迄に工事を完了す。

一四〇〇頃検査官にて下検査を行ふ。

同取外品は特令ありて海軍省造船所船渠で保管す。

（第四船渠南側本部前見張所附近）

（終）

海軍

0688

K.D.D.B = 対スル 覚書

10-7-1946

春月武装解除 = 関スル件

1. 昭和二十年三月二十九日、聯合軍士官に依り春月を検査した所
武装解除不足の箇所が発見された。
2. 貴官は直に春月から下記の武装を撤去するに任せらるらぬ。

射撃指揮装置全部

超高度^高波受信装置全部

赤外線信号器 (哨信儀)

貴官は春月から撤去の上記の兵器が格納されてある場所を
報告しなければならぬ

3. これらの命令が適切に遂行されたかを確認する為、
春月は呉 N.I.O.C. 部長将校団に於り 7月16日頃に

Naval Officer in charge.

6890

0830

崇 正

--	--	--	--	--	--	--	--	--	--	--	--

0880

0690

海

軍

超高频受信装置

短
ultra-High-Frequency

(参考)

検査されるであらう。

4. 全 U.H.F. 射撃指揮装置, 電探 (航海用を除く), 哨信機
(や他の雑多の兵器は全艦船から徹去せねばなら
(復員輸送任務遂行上船の漂航に必要のない))

ぬといふことはいくら強調しても過ぎることはない。

K.D.D.B. は禁入港全艦船に対し彼等が搭載してある

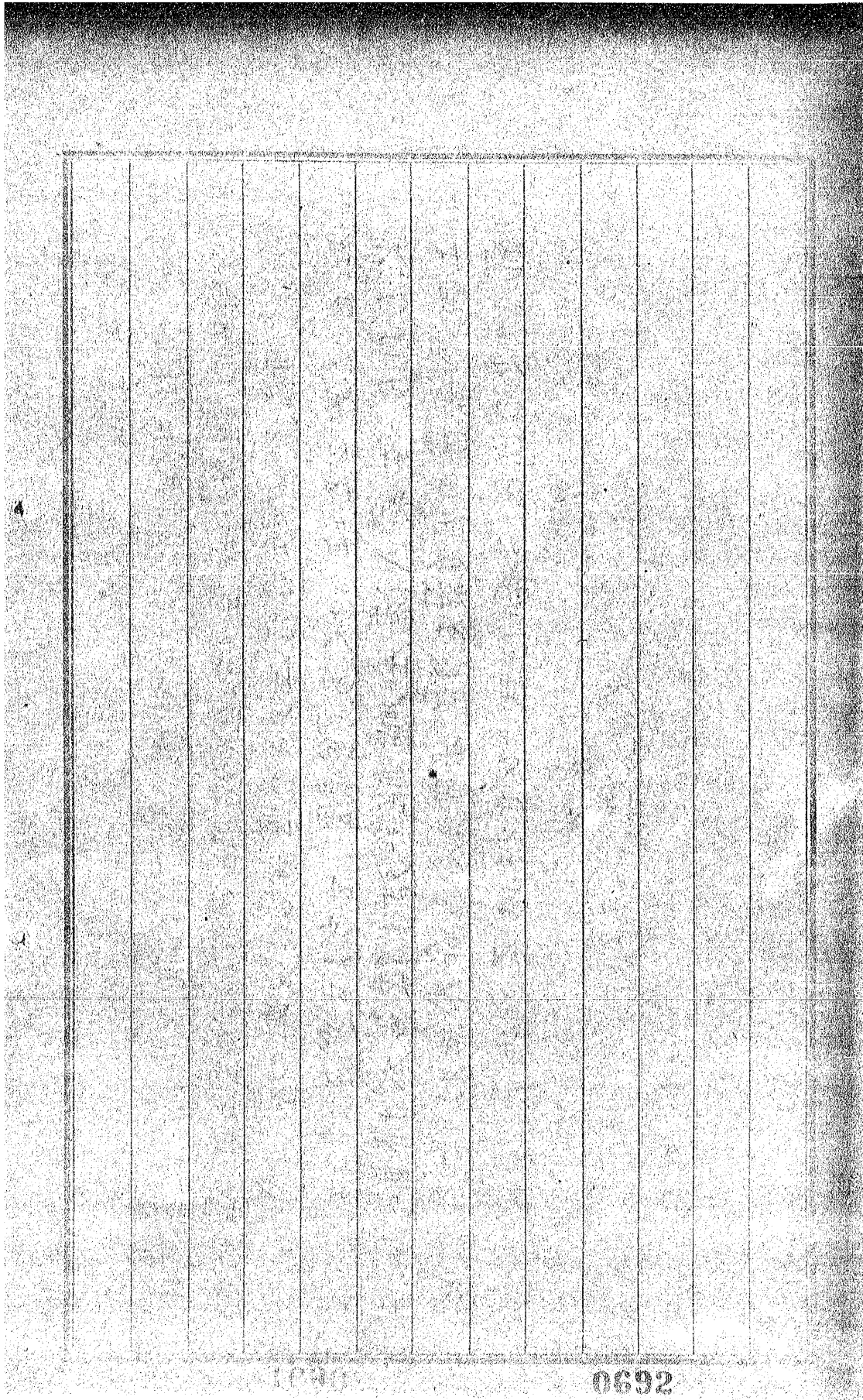
上記の兵器の目録を提出するやう命令せねばならぬ。

而して K.D.D.B. は私に通知せねばならぬ。

K.L.C. Strong

1690

0635



0692

アジア歴史資料センター

Japan Center for Asian Historical Records

<http://www.jacar.go.jp/>

ADMINISTRATOR, NAVAL SHIPPING CONTROL AUTHORITY
SCAJAP FOR JAPANESE MERCHANT MARINE (SCAJAP)
OS15/(12:ge) UNITED STATES PACIFIC FLEET

Serial: 595

24 July, 1946.

From: The Administrator.
To: Distribution List.

Subject: Operation of Ships under SCAJAP Control, General information concerning.

- References: (a) SCAJAP serial 1030, of 21 January, 1946.
- (b) SCAJAP serial 61, of 18 October, 1945.
- (c) SCAJAP serial 684, of 14 November, 1945.
- (d) SCAPIN 1033, of 22 June, 1946.

1. This directive cancels and supersedes reference (a). It applies to all merchant vessels of steel construction of and above 100 gross tons, and ex-Japanese naval vessels being used in repatriation. Paragraphs 3,4, and 5, apply to fishing vessels, lighters, dredges and other miscellaneous types.

2. ALL JAPANESE VESSELS have blanket authority to sail within Japanese home waters, as defined below, at the discretion of the CMMC, Second Demobilization Bureau or other cognizant agency of the Japanese Government, without individual SCAJAP approval, subject to the following provisions.

(a) For the purpose of this directive, Japan is defined to include the four main islands of Japan (Hokkaido, Honshu, Kyushu and Shikoku) and the approximately 1,000 smaller adjacent islands, including the Tsushima Islands and the Ryukyu (Nansei Islands north of 30° North Latitude (excluding Kuchinoshima Island); and excluding (a) Utsuryo (Ullung) Island, Liancourt Rocks (Take Island) and Quelpart (Saishu or Cheju) Island, (b) the Ryukyu (Nansei) Islands south of 30° North Latitude (including Kuchinoshima Island), the Izu, Nanpo, Bonin (Ogasawara) and Volcano (Kazan or Iwo) Island Groups, and all other outlying Pacific Islands [including the Daito (Ohigashi or Oagari) Island Group, and Parece Vela (Okino-tori), Marcus (Minami-tori) and Ganges (Nakano-tori) Islands], and (c) the Kurile (Chishima) Islands, the Habomai (Hapomaze) Island Group (including Suisho, Yuri, Akiyuri, Shibotsu and Tataka Islands) and Shikotan Island.

(b) This authorization does not apply to any voyages outside Japanese home waters, made for any reason whatsoever. Specific authorization by SCAJAP will be required on all such voyages.

Page (2)

(c) Vessels may secure navigational information from Allied port authorities, if available. Vessels engaged in repatriation MUST report every sailing to an Allied port authority, who shall advise SCAJAP and all other interested Allied commands, by a dispatch of suitable precedence on each movement of these ships.

(d) Japanese vessels must keep clear of all restricted areas as prescribed by Allied authorities.

(e) The following vessels are authorized to continue island ferry service as provided by reference (b), between Kagoshima and the Northern Ryukyus: Jitto Maru, No. 1 Yone Maru, Moppo Maru. No Japanese nationals are to be carried as passengers from Japan on these voyage or landed on the islands.

(f) ALL MERCHANT vessels (and any other types which may be designated) which are of steel construction and of and above 100 gross tons, are required to show identification markings as follows:

SCAJAP numbers as assigned, in WHITE BLOCK LETTERS on both sides of the hull amidships. Such numbers and letters to measure FOUR (4) feet high, where space above the water line permits, and otherwise as large as the space will allow. Each number and letter will measure TWO and ONE HALF (2 1/2) feet wide and with lines SIX (6) inches thick. Distance between characters will be ONE (1) foot.

When ships building are completed or when SCAJAP numbers are desired for any other reason, they will be assigned upon application from the CMMC, giving the following information; NAME, TYPE, GROSS TONNAGE, DEAD WEIGHT TONNAGE, LENGTH, BREADTH, type of ENGINE, SPEED, type of FUEL, WHEN and WHERE BUILT, NAME of OWNER, INTERNATIONAL CALL SIGN, PASSENGER CAPACITY (if applicable), TRADE in which vessel is to be employed, and any other pertinent data.

(g) The procedure outlined in reference (c) for the operation of salvage vessels will continue in effect.

(h) CMMC Tokyo, will continue to prepare and submit the following reports to SCAJAP.

- (1) The report "Sailing Schedules of Japanese Merchant Marine."
- (2) The "ten day" and "monthly" cargo reports.
- (3) The daily report of "Arrivals and Departures of Japanese Vessels (over 100 Gross tons) In Japan Ports."
- (4) The ten day report "List of Vessels in Repair."

Page (3)

0695

(5) The ten day report "Allocation of Tonnage."

3. The director of the Japanese Bureau of Fisheries will continue to register with SCAJAP all fishing vessels which are of steel construction and of and above 100 gross tons. Japanese fishing vessels are authorized to operate in the area described in reference (d). SCAJAP numbers are not required on fishing vessels.

4. FISH CARRIERS are considered as merchant vessels and are required to display SCAJAP numbers as specified in paragraph 2 (f) above.

5. The current policy is that tugs, barges, dredges, salvages vessels and other miscellaneous types, will not be assigned SCAJAP numbers. However, the number already assigned a few vessels of these types will remain in effect until cancelled by SCAJAP. In general SCAJAP numbers are assigned ONLY to MERCHANT type vessels, or vessels engaged in merchant trade, which are of and above 100 gross tons and of steel construction, and to U.S. vessels manned by Japanese crews.

C.B. MOISEN

アジア歴史資料センター

Japan Center for Asian Historical Records

<http://www.jacar.go.jp/>

9/E 3/12 1.5 10 #1

0690

SECOND DEMOBILIZATION BUREAU
DEMOBILIZATION BOARD
OF THE
JAPANESE GOVERNMENT

SDB. No. 343.

14 May 1947.

To: Vice-Admiral R. F. Griffin, ComNavFe.
Subject: Standard Articles to be Taken Aboard the Reparation
Vessels.

賠償船に搭載する標準物件

It is requested that your authorization be granted for the standard articles to be taken on board the reparation vessels, which we have decided as set forth in the attached tables.

FOR THE CHIEF OF BUREAU:

I. YOKOYAMA,
Second Demobilization Bureau.

Annexed Table No. 1.

Standard of "A" Class articles for ships' stores to be provided on board the Distribution Ships.

- 1. Under the supervision of Navigating Officer.
 - a. Fixtures

Articles	Units	Quantity		Remarks
		For Destroyers Escorts Mine-Layers Transports	For Other than enumerated in the left	
Chronometer	piece	1	}	Deck-watch may be substituted
Deck-watch	"	1		
Clock, 7day or 1day	"	4	3	
Sextant, Type 9c	"	2	2	
Tripod Divider	"	1	1	
Log	set	1	1	
Prism-Binoculars Power 7-times	piece	3	3	
Binoculars not less than 8cm	"	2		As they are already on board ship
Signal light 21w, or 20cm	"	2	1	Auxiliary Submarine-Chasers and Auxiliary Patrol-boats excepted

b. Consumer goods

Electric-bulbs Edison Type 2000w 100v	piece	1	1	For 21w signal light
		1(spare)	1(spare)	
Edison Type 2000w 200v	"	1	1	Bitto
		1(spare)	1(spare)	

Electric-bulbs	1	1	For 30cm
Type "B"	1 (spare)	1 (spare)	Signal light
500w			

0690

2. Under the supervision of First Lieutenant -

a. Fixtures

Articles	Units	Quantity		Remarks
		For Destroyers Escorts Mine-Layers Transports	For Other than enumerated in the left	
Electric Heaters	piece	Destroyers 5 Others 4	2	
Electric Kettle	"	1	1	
Desk Fan	"	Destroyers 5 Others 4	3	
Insulation Tester or Tester	"	2	1	
Voltmeter	"	2	1	
Ammeter	"	2	1	
Circuit-fixing tools	set	1	1	
Battery tester case	piece	1	1	

b. Consumer Goods

Electric bulbs Type 2 500w 100v	"	1	1	
Electric bulbs Edison Type 500w or 200w 100v	"	2	1	

Electric Edison Type 60w 100v	piece	20% of sockets provided	20% of sockets provided	For spare use
Ditto Edison Type 40w 100v	"	"	"	"
Ditto Edison Type 10 20w 100v	"	"	"	"
Miscellaneous Fuses		in suitable quantity	in suitable quantity	
Adhesive Tapes				

0699
0700

3. Under the supervision of Chief Communication Officer

a. Fixtures

Articles	Units	Quantity		Remarks
		For Destroyers Escorts Mine-Layers Transports	For Other than enumerated in the left	
Receiving Set, Special Type 92 Improved No.4	set	2 1 (spare)	1	
Frequency Meter for long-wave Type 99	"	1	1	
Frequency Meter for short wave Type 99	"	1	1	
Transmitter Special No.5 Type 97	"	Escort 1	1	
Ditto No.4 Type 92	"	Destroyer 1		
Ditto Short No.5 Type 95	"	Destroyer 1		

0700
0009

b. Consumer goods

Vacuum Tubes	piece	1	1	Needful tubes
		1 spare	1 spare	for equipment mounted

Remark! 1. Articles other than those listed in this Standard should be understood as those already on board ships but those of which quantities are ill-balanced shall be suitably adjusted.

2. When the quantity already aboard exceeds the standard the Articles excess shall be taken off the ships and duly returned to the Supply Division for custody thereat.

Annexed Table No. 2:

Standard of "A" class articles for Ships Store
to be provided on board the Reparation Ships.

0701

1. Under the supervision of First Lieutenant.

a. Fixtures (for Seaman'ship).

Articles	Units	quantity		Remarks
		For De- stroyers Escorts Mine-Layers Transports	For other than enu- merated in the left	
Mallet for covering hawser with yarns	piece	2	2	
Mallet for tightening hawser	"			
Marine spike	"	2	2	
Palm leather	"	2	2	
Deck bucket	"	4	3	
Grapnel	"	1	1	
Oar, large & small	"			
Oar lock	"	To be suitably provided in accordance with the number and type of life boats.		
Oar, Japanese type (small)	"			
Boat hook, A	"			
Water barrel	"	1	1	
Bail	"	1	1	
Life jacket	"	As many as crew members.		
Wash tub	"	5	3	
Fire extinguisher	"	5	3	
Kerosene lantern	"	3	2	
Global lantern	"	2	2	
Lantern	"	2	2	

Hammock	sheet		
Mattress for above	"		
Hammock lacing	piece	As many as Crew-Members.	
Hammock clew	set		
Clew-ring	piece		
Fender, middle size	"	2	Small size 2
Boat fender (small size)	"	Suitable number in accordance with the type and number of boats.	
Boatswain's pipe	piece	2	2
Megaphone	"	2	2
Canvas hose	metre	60	48
Hose coupling	piece	10	8
Wrench for above	"	4	4
Canvas-vucket	"	1	1

b. Consumer goods (for Seamanship).

Sail cloth	metre	15	10
Old sail cloth	"	10	5
Waste cloth	kg	5	3
Unbleached cotton cloth	roll	1	1
Sewing twine	kg	0.2	0.2
Six-yarn nettle stuff	"	5	3
3-yarn nettle stuff	"		
Spun yarn rope	"		
Manila rope small size	"		
Wick	piece	8	8
Match-cord	"	20	15
Candle	"	50	40
Wax for seaming twine	kg	0.2	0.2

Sail needle	piece	5	5
Broom-stick	"	10	14
Cow hide	kg	0.5	0.5
Rubber packing	piece	10	8
Paint brush	"	5	5
Deck brush	"	15	10
Broom	"	15	10
Deck broom	"	15	10
Prophy fix ex- tinguisher A	"	8	5
" B	"	8	5
Soap	kg	3	2
Safety matches	piece	15	15

c. Fixtures (for Smithery).

T-shaped anvil	piece	1	1
Sledge hammer	"	1	1
Wood hammer for copper smith	"		
Mallet for above	"	1	1
Scriber	"	1	1
Ruling needle	"	1	1
Calipers (inside)	"	2	2
Calipers (outside)	"	2	2
Divider	"	1	1
Frame saw	"	1	1
Metal cutting scissors	"	2	2
Circular set hammer	"	1	1
Fuller	"	1	1

Chipping fuller	piece	1	1
Fire shovel	"	1	1
Flat tongs	"	3	3
Round tongs	"	3	3
Square tongs	"	2	2
Flat chipping chisel	"	5	5
Cross-cut chisel	"	2	2
Chisel with handle	"	1	1
Soldering iron	"	2	2
Hydro chloric acid pot	"	1	1
Hand drill	"	1	1
Drill bit	"	5	5
Tap and Dies (English Type)	set	2*	2
" (French Type)	"	1	1
Hand hammer	piece	4	4
File	"	5	5
Vice	"	2	2
Torch lamp	"	1	1
Folding measure	"	2	2

d. Consumer goods (for Smithery).

Tinned sheet	sheet	3	2
Brass solder	kg	0.5	0.3
Solder	"	1	0.5
Saw blade for frame saw	piece	5	5
Steel bar	"	3	3
Brass sheet	sheet	1	1
Copper sheet	"	1	1

0705

Carolic acid	kg	0.5	0.5
Borax	"	0.5	0.5
File holder	piece	2	2

e. Fixtures (for Carpentry).

Screw driver	piece	2	2
Twist drill	"	2	2
Iron hammer	"	3	3
Axe	"	1	1
Pincer	"	1	1
Saw (grain wise)	sheet	2	2
Cross cut saw	"	3	3
Plane	piece	2	2
Chisel (Thick bit)	"	2	2
Chisel (Thin bit)	"	2	2
Carpenter's square	"	1	1

f. Consumer goods (for Carpentry)..

Old blankets	kg	1	1
Iron nail	"	3	2
Triangular drill	piece	1	1
Square drill	"	1	1
Semi-Circular drill	"	1	1
Saw-setting file	"	2	2
Planking	sheet	8	8
Putty	kg	3	2
Grindstone, medium	piece	2	2
Grindstone, fine	"	1	1
Grindstone, coarse	"	2	2

2. Under the supervision of Navigating Officer.

a. Fixtures

Articles	Units	Quantity		Remarks
		For De- stroyers Escorts Mine-layers Transports	For other than au- torated in the list	
Life buoy	piece	4	2	
Set square	"	2	2	
Divider	"	2	2	
Mast-light	"	1	1	
Side-light	"	2	2	
Anchor-light	"	1	1	
Signal line	metre	100	80	
Lead line	"	100	80	
Lead	piece	2	2	
Naval Signal flag	suit	1	1	Width $1\frac{2}{3}$ - 2
Hand flag	"	2	2	
Signal flag, telling the length of cable dropped or hoisted	"	1	1	
Anchor flag	"	1	1	
Signal flag for anchor hoisting	"	1	1	
Signal flag hooks A	piece	140	140	
ditto B	"	5	5	
Signal Black ball	"	2	2	
Speed mark	"	(as many as the Screw-shafts)		
International signal Book. (Japanese- English)	copy	1	1	
ditto (Japanese)	"	1	1	
Meteorological table	"	1	1	
Ship-handling table	"	1	1	

b. Consumer goods

Chronometer log	piece	1	1
Log book	"	1	1
Signal Watch memo	"	1	1
Naval Signal memo-book A	"	10	10
Naval Signal memo-paper A.B.	"	15	15
Observation book	"	1	1
Observation paper	sheet	5	5
Marine Meteorological record at sea	copies	1	1
Self-recording paper for wind-direction meter	sheets	10	10
Blanks for Weather-charts	"	100	100
Cotton thread	kg	0.1	0.1
Cotton needle	piece	5	5
Gauze	"	1	1

0707

3. Under the supervision of Chief Communication Officer.

a. Fixtures

Articles	Units	Quantity		Remarks
		For De- stroyers Esports Mine-layers Transports	For other than enu- merated in the left	
International Code- book A	Copies	1	1	
ditto B				

b. Consumer goods

Telegram draft decode-blanks	piece	10	10	
Wireless Message forms	"	10	10	
ditto (English)	"	5	5	
Meteorological Wireless Message forms (receiving)	"	10	10	
Wireless Operators log	"	1	1	
Feather brush	"	1	1	

4. Under the supervision of Chief Engineer.

a. Fixtures

Articles	Units	Quantity		Remarks
		For De- stroyers Escorts Mine-layers Transports	For other than enu- merated in the left	
Oil feeder	piece	5	4	
Syringe	"	2	2	
Oil can	"	1	1	
Funnel	"	2	2	
Metal bucket	"	2	} For coal burning and mixed burn- ing Ships only	
Shovel	"	4		
Fire rake	"	2		
Mude rake	"	2		
Slice bar	"	2		
Poker	"	2		
Coal mallet	"	2		
Monkey wrench	"	2	2	
Sledge hammer	"	1	1	
Copper hammer	"	1	1	
Lead hammer	piece	1	1	
Plier	"	3	3	
Oil stone	"	1	1	
Packing-Knife	"	1	1	
Scraper	"	2	2	
Boiler-water Tester	"	1		(for steem propel- led Snips only)
Flash lights	"	15	12	
Canvas hose	metre	36	36	
Coupling for above	piece	14	14	
Thermometer A	"	2	2	
ditto B	"	3	3	

Thermometer C	piece	5	4
ditto D	"	2	2
ditto E	"	5	4
Thermometer Case	"	15	13
Stoker's Spectacles	pair	2	(for steam propelled Ships only)
Drinking water-tank	piece	2	2

b. Consumer goods

Waste Cotton thread	kg	100	80
Waste Cotton Clothe	"	100	80
Woolen Yarn	"	0.2	0.1
Pressure-Indicator-Cord	"	0.3	(for Ships Carrying Pressure Indicators only)
Steel wire	"	1	0.5
Semi-Circular Steel wire	"	0.5	0.5
Copper wire	"	0.5	0.5
Semi-Circular Copper wire	"	0.5	0.5
Brass wire	"	0.5	0.5
Semi-Circular Brass wire	"	0.5	0.5
Lead wire	"	0.5	0.5
Glass tube	piece	5	4
Glass plate for Water gauge	sheets	4	(for steam propelled Ships only)
Test flask	piece	2	2
Test tube	"	3	3
Syringe	"	3	3
Electric bulb for flash light	"	20	15
Glass funnel	"	1	1

Packing for High temperature use	metre	1	1
Packing thread (Cotton)	kg	2	1
Stern tube Packing	"	2	1
Rubber-ring Packing	piece	4	3
Felt Packing	metre	1	1
Packing for Water gauge A	piece	3	} for steam propelled Ships only
ditto B	set	2	
Brown Card board Paper	sheet	2	1
Round Asbestos Packing	kg	1	1
Plate Asbestos Packing	metre	1	1
Tape Asbestos Packing	"	1	1
Plate Rubber Packing	"	0.5	0.5
Hand broom	piece	5	4
Stokers gloves A & B	pair	3	(for Steam propelled Ships only)
Fatigue gloves	"	20	15
Emery Cloth	sheet	15	10
Emery powder	kg	0.5	0.3
Emery paste	"	0.5	0.3
Soda for Sundry use	"	10	8
Nitric acid	piece	1	1
Potassium Chromate	"	1	1
Graphite paste	kg	1	1
White lead paste	"	2	1
Phenol Naphthaline	piece	1	} for Ships provided with Boiler water testers only
Sulphuric Acid	"	1	
Dry Battery	"	50	45

0712

5. Under the supervision of Chief Paymaster.

a. Fixtures.

Articles	Units	Quantity		Remarks
		For De- stroyers Escorts Mine-layers Transports	For other than enu- merated in the left	
Pillows	piece	7	5	
Wash basin (C)	"	9	6	
Ink-slab (Japanese style)	"	2	2	
Ink-slab-case (ditto)	"	2	2	
Abacus	"	1	1	
Mineograph	"	1	1	
File-plate for above	"	1	1	
Cooking utensils & table-wares	"	So many as crew members.		

b. Consumer goods.

"Fude" (Japanese pen)	"	3	3	
"Suzi" (Japanese Ink-stick)	"	1	1	
Chalk	"	50	40	Quantities to be fitfully adjusted as may be needful for the voyage.
Ink-pad (for Japanese seal)	"	2	2	
Ink for above	Gramme	2	2	
Printer's ink	piece	3	3	
" roll	"	1	1	
Steel pen	"	3	3	
Duplicators under board	sheet	2	2	

pen	piece	36	30	
pen holder	"	5	4	
Ink	"	3	3	
pencil	"	40	35	
Ruled Rice paper (Japanese-full size)	sheets	500	450	Quantities to be fitfully adjusted as may be needful for the voyage
"Ditto" (half size)	"	700	450	
Ruled paper (full size)	"	500	450	
"Ditto" (half size)	"	700	650	
Non-ruled Rice-paper (full size)	"	500	450	
Stencil paper for mimeograph	"	70	65	
Carbon paper	"	80	75	
Foreign paper "C"	"	1000	900	
Envelope "large size"	"	50	45	
" " "small"	"	150	125	
Cooking and Table necessaries	"	As much as needed for the crew members in the sailing		

Remark:

1. When articles on board exceed this Standard the excess quantity should be returned to the Supply Division.
2. Articles other than those listed in this Standard will be left as they are at present, except:-
 - (a) Articles which are either not needed for present voyage or particularly in excess should be returned to the Supply Division.
 - (b) When the articles on board at present are found ill-balanced in quantity, they will be suitably adjusted.

3. Articles for Engine & Machinery room already on board at present will be so left just as they are.

4. Minimum quantity of fuel will be loaded on board as required for present voyage.

5. Hydraugraphic books and Charts: Same as above.

6. Medical supplies: Same as above.

7. Clothing: To be managed with those already lent to the officers and men of the ships, and will not be specially put aboard for the delivery voyage.

8. Provisions: enough quantity for crew-members for days on passage required for present voyage plus 4 days.

Note. For ships carrying aboard the returning officers and men, provisions will be equipped for the return-voyage with some adequate margin.

9. Canteen goods: to be put aboard for the number of officers and men on board for a month's supply.